

PAI-1 Polyclonal Antibody

Description

Product type	Primary Antibody
Code	BT-AP06885
Host	Rabbit
Isotype	IgG
Size	20ul, 50ul, 100ul
Immunogen	The antiserum was produced against synthesized peptide derived from human PAI-1. AA range:266-315
Mol wt	45060
Species reactivity	Human, Mouse, Rat
Clonality	Polyclonal
Recommended application	WB, IHC-p, ELISA
Concentration	1 mg/ml
Full name	PAI-1 Antibody
Synonyms	SERPINE1; PAI1; PLANH1; Plasminogen activator inhibitor 1; PAI; PAI-1; Endothelial plasminogen activator inhibitor; Serpin E1

This product is for research use only, not for use in human, therapeutic or diagnostic procedure.

Background

SERPINE1 encodes a member of the serine proteinase inhibitor (serpin) superfamily. This member is the principal inhibitor of tissue plasminogen activator (tPA) and urokinase (uPA), and hence is an inhibitor of fibrinolysis. Defects in SERPINE1 are the cause of plasminogen activator inhibitor-1 deficiency (PAI-1 deficiency), and high concentrations of the gene product are associated with thrombophilia. Alternatively spliced transcript variants encoding different isoforms have been found for SERPINE1.

Recommended Dilution

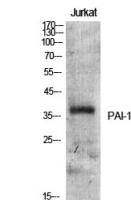
WB: 1: 500 - 1: 2000

IHC: 1: 100 - 1: 300

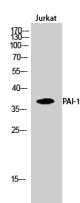
ELISA: 1: 20000

Not yet tested in other applications.

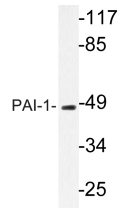
Images



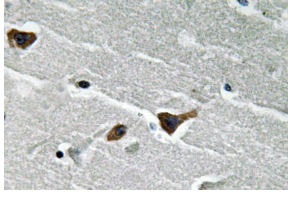
Western Blot analysis of various cells using PAI-1 Polyclonal Antibody



Western Blot analysis of Jurkat cells using PAI-1 Polyclonal Antibody



Western blot analysis of lysate from Jurkat cells, using PAI-1 antibody.



Immunohistochemistry analysis of PAI-1 antibody in paraffin-embedded human brain tissue.

Storage

-20°C for one year

501 Changsheng S Rd, Nanhu Dist, Jiaxing, Zhejiang, China

Tel: 86 21 31007137 | E-mail: save@bt-laboratory.com | www.bt-laboratory.com