

PAI-2 Polyclonal Antibody

Description

Product type	Primary Antibody
Code	BT-AP06886
Host	Rabbit
Isotype	IgG
Size	20ul, 50ul, 100ul
Immunogen	The antiserum was produced against synthesized peptide derived from human PAI-2. AA range:258-307
Mol wt	46596
Species reactivity	Human
Clonality	Polyclonal
Recommended application	WB, IHC-p, ELISA
Concentration	1 mg/ml
Full name	PAI-2 Antibody
Synonyms	SERPINB2; PAI2; PLANH2; Plasminogen activator inhibitor 2; PAI-2; Monocyte Arg-serpin; Placental plasminogen activator inhibitor; Serpin B2; Urokinase inhibitor

This product is for research use only, not for use in human, therapeutic or diagnostic procedure.

Background

SERPINB2 (Serpin Family B Member 2) is a Protein Coding gene. Diseases associated with SERPINB2 include gingivitis and endometrial cancer. Among its related pathways are Complement and coagulation cascades and Formation of Fibrin Clot (Clotting Cascade). GO annotations related to this gene include serine-type endopeptidase inhibitor activity. An important paralog of this gene is SERPINB12.

Recommended Dilution

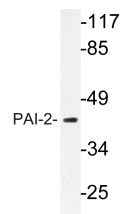
WB: 1: 500 - 1: 2000

IHC: 1: 100 - 1: 300

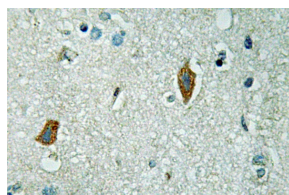
ELISA: 1: 40000

Not yet tested in other applications.

Images



Western blot analysis of lysate from MCF-7 cells, using PAI-2 antibody.



Immunohistochemistry analysis of PAI-2 antibody in paraffin-embedded human brain tissue.

Storage

-20°C for one year

501 Changsheng S Rd, Nanhu Dist, Jiaxing, Zhejiang, China

Tel: 86 21 31007137 | E-mail: save@bt-laboratory.com | www.bt-laboratory.com