

PAK5/6 Polyclonal Antibody

Description

Product type	Primary Antibody
Code	BT-AP06892
Host	Rabbit
Isotype	IgG
Size	20ul, 50ul, 100ul
Immunogen	The antiserum was produced against synthesized peptide derived from human PAK5/6. AA range:566-615
Mol wt	74869
Species reactivity	Human, Mouse
Clonality	Polyclonal
Recommended application	WB, ELISA
Concentration	1 mg/ml
Full name	PAK5/6 Antibody
Synonyms	PAK7; KIAA1264; PAK5; Serine/threonine-protein kinase PAK 7; p21-activated kinase 5; PAK-5; p21-activated kinase 7; PAK-7; PAK6; PAK5; Serine/threonine-protein kinase PAK 6; PAK-5; p21-activated kinas

This product is for research use only, not for use in human, therapeutic or diagnostic procedure.

Background

The protein encoded by PAK5 (p21 (RAC1) activated kinase 5) is a member of the PAK family of Ser/Thr protein kinases. PAK family members are known to be effectors of Rac/Cdc42 GTPases, which have been implicated in the regulation of cytoskeletal dynamics, proliferation, and cell survival signaling. This kinase contains a CDC42/Rac1 interactive binding (CRIB) motif, and has been shown to bind CDC42 in the presence of GTP. This kinase is predominantly expressed in brain. It is capable of promoting neurite outgrowth, and thus may play a role in neurite development. This kinase is associated with microtubule networks and induces microtubule stabilization. The subcellular localization of this kinase is tightly regulated during cell cycle progression. Alternatively spliced transcript variants encoding the same protein have been described.

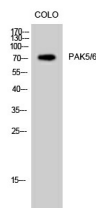
Recommended Dilution

WB: 1: 500 - 1: 2000

ELISA: 1: 40000

Not yet tested in other applications.

Images



Western Blot analysis of COLO cells using PAK5/6 Polyclonal Antibody

Storage

-20°C for one year

