

## PAR-3 Polyclonal Antibody

### Description

Product type	Primary Antibody
Code	BT-AP06920
Host	Rabbit
Isotype	IgG
Size	20ul, 50ul, 100ul
Immunogen	The antiserum was produced against synthesized peptide derived from human F2RL2. AA range:38-87
Mol wt	42508
Species reactivity	Human
Clonality	Polyclonal
Recommended application	IF, ELISA
Concentration	1 mg/ml
Full name	PAR-3 Antibody
Synonyms	F2RL2; PAR3; Proteinase-activated receptor 3; PAR-3; Coagulation factor II receptor-like 2; Thrombin receptor-like 2

This product is for research use only, not for use in human, therapeutic or diagnostic procedure.

### Background

F2RL2 encodes a member of the protease-activated receptor (PAR) family which is a subfamily of the seven transmembrane G protein-coupled cell surface receptor family. The coagulation factor II thrombin receptor like 2 acts as a cofactor in the thrombin-mediated cleavage and activation of the protease-activated receptor family member PAR4. The encoded protein plays an essential role in hemostasis and thrombosis. Alternate splicing results in multiple transcript variants that encode different isoforms.

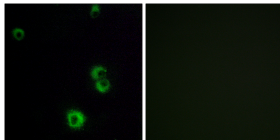
### Recommended Dilution

IF: 1: 200 - 1: 1000

ELISA: 1: 10000

Not yet tested in other applications.

### Images



Immunofluorescence analysis of MCF7 cells, using F2RL2 Antibody. The picture on the right is blocked with the synthesized peptide.

### Storage

-20°C for one year