

PAR4 Polyclonal Antibody

Description

Product type	Primary Antibody
Code	BT-AP06922
Host	Rabbit
Isotype	IgG
Size	20ul, 50ul, 100ul
Immunogen	The antiserum was produced against synthesized peptide derived from human Prostate Apoptosis Response protein-4. AA range:291-340
Mol wt	36568
Species reactivity	Human, Mouse, Rat
Clonality	Polyclonal
Recommended application	WB, IHC-p, ELISA
Concentration	1 mg/ml
Full name	PAR4 Antibody
Synonyms	PAWR; PAR4; PRKC apoptosis WT1 regulator protein; Prostate apoptosis response 4 protein; Par-4

This product is for research use only, not for use in human, therapeutic or diagnostic procedure.

Background

The tumor suppressor WT1 represses and activates transcription. Pro-apoptotic WT1 regulator encoded by PAWR is a WT1-interacting protein that itself functions as a transcriptional repressor. It contains a putative leucine zipper domain which interacts with the zinc finger DNA binding domain of WT1. Pro-apoptotic WT1 regulator is specifically upregulated during apoptosis of prostate cells.

Recommended Dilution

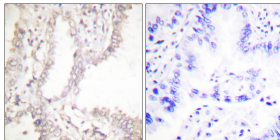
WB: 1: 500 - 1: 2000

IHC: 1: 100 - 1: 300

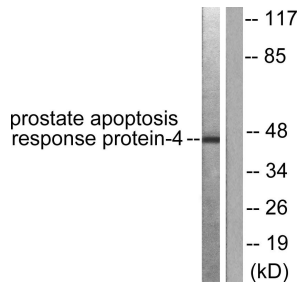
ELISA: 1: 10000

Not yet tested in other applications.

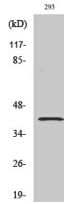
Images



Immunohistochemistry analysis of paraffin-embedded human lung carcinoma tissue, using Prostate Apoptosis Response protein-4 Antibody. The picture on the right is blocked with the synthesized peptide.



Western blot analysis of lysates from NIH/3T3 cells, using Prostate Apoptosis Response protein-4 Antibody. The lane on the right is blocked with the synthesized peptide.



Western Blot analysis of various cells using PAR4 Polyclonal Antibody

Storage

-20°C for one year

501 Changsheng S Rd, Nanhu Dist, Jiaxing, Zhejiang, China

Tel: 86 21 31007137 | E-mail: save@bt-laboratory.com | www.bt-laboratory.com