

## c-Src(Phospho Tyr419) Polyclonal Antibody

### Description

<b>Product type</b>	Primary Antibody
<b>Code</b>	BT-AP06923
<b>Host</b>	Rabbit
<b>Isotype</b>	IgG
<b>Size</b>	20ul, 50ul, 100ul
<b>Immunogen</b>	Synthesized phospho-peptide around the phosphorylation site of human c-Src (phospho Tyr419)
<b>Mol wt</b>	59704
<b>Species reactivity</b>	Human, Mouse, Rat
<b>Clonality</b>	Polyclonal
<b>Recommended application</b>	WB, IHC-p, IF, ELISA
<b>Concentration</b>	1 mg/ml
<b>Full name</b>	Proto-oncogene tyrosine-protein kinase Src
<b>Synonyms</b>	Proto-oncogene tyrosine-protein kinase Src; SRC; SRC1; Proto-oncogene tyrosine-protein kinase Src; Proto-oncogene c-Src; pp60c-src; p60-Src

**This product is for research use only, not for use in human, therapeutic or diagnostic procedure.**

### Background

This gene is highly similar to the v-src gene of Rous sarcoma virus. This proto-oncogene may play a role in the regulation of embryonic development and cell growth. The protein encoded by this gene is a tyrosine-protein kinase whose activity can be inhibited by phosphorylation by c-SRC kinase. Mutations in this gene could be involved in the malignant progression of colon cancer. Two transcript variants encoding the same protein have been found for this gene.

### Recommended Dilution

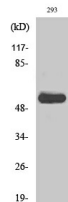
WB: 1: 500 - 1: 2000

IHC-p: 1: 100 - 1: 300

ELISA: 1: 20000

Not yet tested in other applications.

### Images



Western Blot analysis of various cells using Phospho-c-Src (Y419) Polyclonal Antibody diluted at 1:1000

### Storage

-20°C for 1 year