

## PAR-6Beta Polyclonal Antibody

### Description

<b>Product type</b>	Primary Antibody
<b>Code</b>	BT-AP06925
<b>Host</b>	Rabbit
<b>Isotype</b>	IgG
<b>Size</b>	20ul, 50ul, 100ul
<b>Immunogen</b>	The antiserum was produced against synthesized peptide derived from human PARD6B. AA range:233-282
<b>Mol wt</b>	41182
<b>Species reactivity</b>	Human, Mouse
<b>Clonality</b>	Polyclonal
<b>Recommended application</b>	WB, IHC-p, ELISA
<b>Concentration</b>	1 mg/ml
<b>Full name</b>	PAR-6beta Antibody
<b>Synonyms</b>	PARD6B; PAR6B; Partitioning defective 6 homolog beta; PAR-6 beta; PAR-6B

This product is for research use only, not for use in human, therapeutic or diagnostic procedure.

### Background

PARD6B is a member of the PAR6 family and encodes a protein with a PSD95/Discs-large/ZO1 (PDZ) domain, an OPR domain and a semi-Cdc42/Rac interactive binding (CRIB) domain. This cytoplasmic protein is involved in asymmetrical cell division and cell polarization processes as a member of a multi-protein complex.

### Recommended Dilution

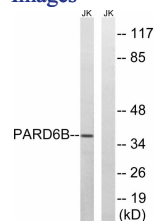
WB: 1: 500 - 1: 2000

IHC: 1: 100 - 1: 300

ELISA: 1: 5000

Not yet tested in other applications.

### Images



Western blot analysis of lysates from Jurkat cells, using PARD6B Antibody. The lane on the right is blocked with the synthesized peptide.

### Storage

-20°C for one year