

## PARD3A Polyclonal Antibody

### Description

<b>Product type</b>	Primary Antibody
<b>Code</b>	BT-AP06928
<b>Host</b>	Rabbit
<b>Isotype</b>	IgG
<b>Size</b>	20ul, 50ul, 100ul
<b>Immunogen</b>	The antiserum was produced against synthesized peptide derived from human PARD3. AA range:1141-1190
<b>Mol wt</b>	151423
<b>Species reactivity</b>	Human, Mouse, Rat
<b>Clonality</b>	Polyclonal
<b>Recommended application</b>	WB, IHC-p, IF, ELISA
<b>Concentration</b>	1 mg/ml
<b>Full name</b>	PARD3A Antibody
<b>Synonyms</b>	PARD3; PAR3; PAR3A; Partitioning defective 3 homolog; PAR-3; PARD-3; Atypical PKC isotype-specific-interacting protein; ASIP; CTCL tumor antigen se2-5; PAR3-alpha

This product is for research use only, not for use in human, therapeutic or diagnostic procedure.

### Background

PARD3 encodes a member of the PARD protein family. PARD family members interact with other PARD family members and other proteins; they affect asymmetrical cell division and direct polarized cell growth. Multiple alternatively spliced transcript variants have been described for PARD3.

### Recommended Dilution

WB: 1: 500 - 1: 2000

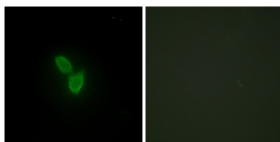
IHC: 1: 100 - 1: 300

IF: 1: 200 - 1: 1000

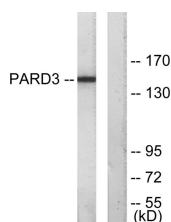
ELISA: 1: 20000

Not yet tested in other applications.

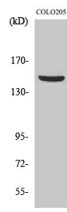
### Images



Immunofluorescence analysis of HepG2 cells, using PARD3 Antibody. The picture on the right is blocked with the synthesized peptide.



Western blot analysis of lysates from COLO205 cells, using PARD3 Antibody. The lane on the right is blocked with the synthesized peptide.



## Western Blot analysis of various cells using PARD3A Polyclonal Antibody

### Storage

-20°C for one year

501 Changsheng S Rd, Nanhu Dist, Jiaxing, Zhejiang, China

Tel: 86 21 31007137 | E-mail: [save@bt-laboratory.com](mailto:save@bt-laboratory.com) | [www.bt-laboratory.com](http://www.bt-laboratory.com)