

## PARP-3 Polyclonal Antibody

### Description

<b>Product type</b>	Primary Antibody
<b>Code</b>	BT-AP06936
<b>Host</b>	Rabbit
<b>Isotype</b>	IgG
<b>Size</b>	20ul, 50ul, 100ul
<b>Immunogen</b>	The antiserum was produced against synthesized peptide derived from human PARP3. AA range:10-59
<b>Mol wt</b>	60089
<b>Species reactivity</b>	Human
<b>Clonality</b>	Polyclonal
<b>Recommended application</b>	IHC-p, ELISA
<b>Concentration</b>	1 mg/ml
<b>Full name</b>	PARP-3 Antibody
<b>Synonyms</b>	PARP3; ADPRT3; ADPRTL3; Poly [ADP-ribose] polymerase 3; PARP-3; hPARP-3; ADP-ribosyltransferase diphtheria toxin-like 3; ARTD3; IRT1; NAD(+) ADP-ribosyltransferase 3; ADPRT-3; Poly[ADP-ribose] synthase

**This product is for research use only, not for use in human, therapeutic or diagnostic procedure.**

### Background

The poly(ADP-ribose) polymerase family member 3 encoded by PARP3 belongs to the PARP family. These enzymes modify nuclear proteins by poly-ADP-ribosylation, which is required for DNA repair, regulation of apoptosis, and maintenance of genomic stability. This gene encodes the poly(ADP-ribosyl)transferase 3, which is preferentially localized to the daughter centriole throughout the cell cycle. Alternatively spliced transcript variants encoding different isoforms have been identified.

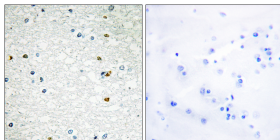
### Recommended Dilution

IHC: 1: 100 - 1: 300

ELISA: 1: 5000

Not yet tested in other applications.

### Images



Immunohistochemistry analysis of paraffin-embedded human brain, using PARP3 Antibody. The picture on the right is blocked with the synthesized peptide.

### Storage

-20°C for one year