

PARP-4 Polyclonal Antibody

Description

Product type	Primary Antibody
Code	BT-AP06937
Host	Rabbit
Isotype	IgG
Size	20ul, 50ul, 100ul
Immunogen	The antiserum was produced against synthesized peptide derived from human PARP4. AA range:1151-1200
Mol wt	192589
Species reactivity	Human
Clonality	Polyclonal
Recommended application	IHC-p, ELISA
Concentration	1 mg/ml
Full name	PARP-4 Antibody
Synonyms	PARP4; ADPRTL1; KIAA0177; PARPL; Poly [ADP-ribose] polymerase 4; PARP-4; 193 kDa vault protein; ADP-ribosyltransferase diphtheria toxin-like 4; ARTD4; PARP-related/1alpha1-related H5/proline-rich; PH5

This product is for research use only, not for use in human, therapeutic or diagnostic procedure.

Background

PARP4 encodes poly(ADP-ribosyl)transferase-like 1 protein, which is capable of catalyzing a poly(ADP-ribosyl)ation reaction. Poly [ADP-ribose] polymerase 4 has a catalytic domain which is homologous to that of poly (ADP-ribosyl) transferase, but lacks an N-terminal DNA binding domain which activates the C-terminal catalytic domain of poly (ADP-ribosyl) transferase. Since this protein is not capable of binding DNA directly, its transferase activity may be activated by other factors such as protein-protein interaction mediated by the extensive carboxyl terminus.

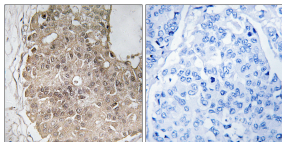
Recommended Dilution

IHC: 1: 100 - 1: 300

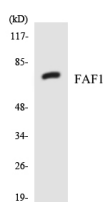
ELISA: 1: 10000

Not yet tested in other applications.

Images



Immunohistochemistry analysis of paraffin-embedded human breast carcinoma, using PARP4 Antibody. The picture on the right is blocked with the synthesized peptide.



Western blot analysis of the lysates from HT-29 cells using FAF1 antibody.

Storage

-20°C for one year

501 Changsheng S Rd, Nanhu Dist, Jiaxing, Zhejiang, China

Tel: 86 21 31007137 | E-mail: save@bt-laboratory.com | www.bt-laboratory.com