

mCherry-Tag Polyclonal Antibody

Description

Product type	Primary Antibody
Code	BT-AP06938
Host	Mouse
Isotype	IgG
Size	100ul, 50ul, 20ul
Immunogen	Recombinant Protein of mCherry-Tag
Mol wt	N/A
Species reactivity	Species independent
Clonality	Polyclonal
Recommended application	WB

Concentration

Full name

Synonyms

This product is for research use only, not for use in human, therapeutic or diagnostic procedure.

Background

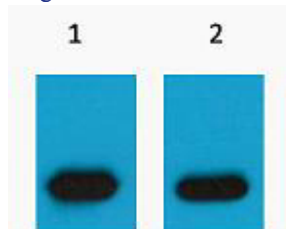
mCherry is derived from proteins originally isolated from Cnidarians (jelly fish, sea anemones and corals), and is used as a fluorescent tracer in transfection and transgenic experiments. The prototype for these fluorescent proteins is Green Fluorescent Protein (GFP), which is a ~27kDa protein isolated originally from the jellyfish *Aequoria victoria*. The mCherry protein is derived from DsRed, a red fluorescent protein related to GFP isolated from so-called disc corals of the genus *Discosoma*.

Recommended Dilution

WB: 1: 5000 - 10000

Not yet tested in other applications.

Images



Western blot analysis of mCherry Recombinant protein, diluted at 1:5000, Secondary antibody was diluted at 1:20000

Storage

-20°C for 1 year