

Pax-2 Polyclonal Antibody

Description

Product type	Primary Antibody
Code	BT-AP06946
Host	Rabbit
Isotype	IgG
Size	20ul, 50ul, 100ul
Immunogen	The antiserum was produced against synthesized peptide derived from human Pax-2. AA range:144-193
Mol wt	44734
Species reactivity	Human, Mouse
Clonality	Polyclonal
Recommended application	WB, IHC-p, ELISA
Concentration	1 mg/ml
Full name	Pax-2 Antibody
Synonyms	PAX2; Paired box protein Pax-2

This product is for research use only, not for use in human, therapeutic or diagnostic procedure.

Background

PAX2 encodes paired box gene 2, one of many human homologues of the Drosophila melanogaster gene prd. The central feature of this transcription factor gene family is the conserved DNA-binding paired box domain. PAX2 is believed to be a target of transcriptional suppression by the tumor suppressor gene WT1. Mutations within PAX2 have been shown to result in optic nerve colobomas and renal hypoplasia. Alternative splicing of PAX2 results in multiple transcript variants.

Recommended Dilution

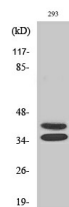
WB: 1: 500 - 1: 2000

IHC: 1: 100 - 1: 300

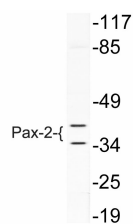
ELISA: 1: 5000

Not yet tested in other applications.

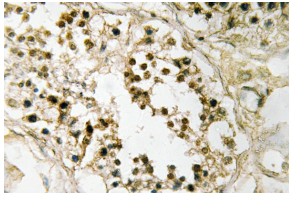
Images



Western Blot analysis of various cells using Pax-2 Polyclonal Antibody



Western blot analysis of lysate from 293 cells, using Pax-2 antibody.



Immunohistochemistry analysis of Pax-2 antibody in paraffin-embedded human testis tissue.

Storage

-20°C for one year

501 Changsheng S Rd, Nanhu Dist, Jiaxing, Zhejiang, China

Tel: 86 21 31007137 | E-mail: save@bt-laboratory.com | www.bt-laboratory.com