

Pax-8 Polyclonal Antibody

Description

Product type	Primary Antibody
Code	BT-AP06951
Host	Rabbit
Isotype	IgG
Size	20ul, 50ul, 100ul
Immunogen	The antiserum was produced against synthesized peptide derived from human Pax-8. AA range:145-194
Mol wt	48119
Species reactivity	Human, Mouse, Rat
Clonality	Polyclonal
Recommended application	WB, IHC-p, ELISA
Concentration	1 mg/ml
Full name	Pax-8 Antibody
Synonyms	PAX8; Paired box protein Pax-8

This product is for research use only, not for use in human, therapeutic or diagnostic procedure.

Background

PAX8 encodes a member of the paired box (PAX) family of transcription factors. Members of PAX8 family typically encode proteins that contain a paired box domain, an octapeptide, and a paired-type homeodomain. This nuclear protein is involved in thyroid follicular cell development and expression of thyroid-specific genes. Mutations in PAX8 have been associated with thyroid dysgenesis, thyroid follicular carcinomas and atypical follicular thyroid adenomas. Alternatively spliced transcript variants encoding different isoforms have been described.

Recommended Dilution

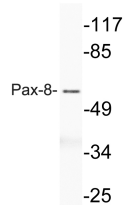
WB: 1: 500 - 1: 2000

IHC: 1: 100 - 1: 300

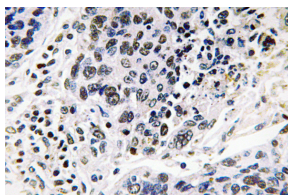
ELISA: 1: 10000

Not yet tested in other applications.

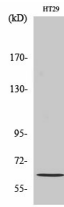
Images



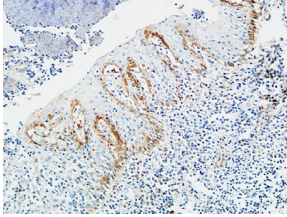
Western blot analysis of lysate from HT-29 cells, using Pax-8 antibody.



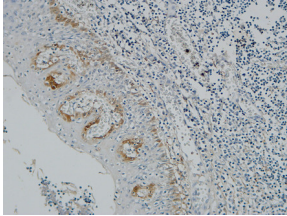
Immunohistochemistry analysis of Pax-8 antibody in paraffin-embedded human lung carcinoma tissue.



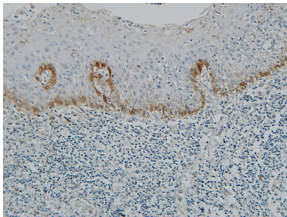
Western Blot analysis of various cells using Pax-8 Polyclonal Antibody cells nucleus.



Immunohistochemical analysis of paraffin-embedded Human Amygdala. 1, Antibody was diluted at 1:100(4° overnight). 2, High-pressure and temperature EDTA, pH8.0 was used for antigen retrieval. 3,Secondary antibody was diluted at 1:200(room temperature, 30min).



Immunohistochemical analysis of paraffin-embedded Human Amygdala. 1, Antibody was diluted at 1:100(4° overnight). 2, High-pressure and temperature EDTA, pH8.0 was used for antigen retrieval. 3,Secondary antibody was diluted at 1:200(room temperature, 30min).



Immunohistochemical analysis of paraffin-embedded Human Amygdala. 1, Antibody was diluted at 1:100(4° overnight). 2, High-pressure and temperature EDTA, pH8.0 was used for antigen retrieval. 3,Secondary antibody was diluted at 1:200(room temperature, 30min).

Storage

-20°C for one year

501 Changsheng S Rd, Nanhu Dist, Jiaxing, Zhejiang, China

Tel: 86 21 31007137 | E-mail: save@bt-laboratory.com | www.bt-laboratory.com