

Pax-9 Polyclonal Antibody

Description

Product type	Primary Antibody
Code	BT-AP06952
Host	Rabbit
Isotype	IgG
Size	20ul, 50ul, 100ul
Immunogen	The antiserum was produced against synthesized peptide derived from human Pax-9. AA range:158-207
Mol wt	36310
Species reactivity	Human, Mouse, Rat
Clonality	Polyclonal
Recommended application	WB, ELISA
Concentration	1 mg/ml
Full name	Pax-9 Antibody
Synonyms	PAX9; Paired box protein Pax-9

This product is for research use only, not for use in human, therapeutic or diagnostic procedure.

Background

PAX9 is a member of the paired box (PAX) family of transcription factors. Members of PAX9 family typically contain a paired box domain, an octapeptide, and a paired-type homeodomain. These genes play critical roles during fetal development and cancer growth. Mice lacking PAX9 exhibit impaired development of organs, musculature and the skeleton, including absent and abnormally developed teeth, and neonatal lethality. Mutations in the human gene are associated with selective tooth agenesis-3.

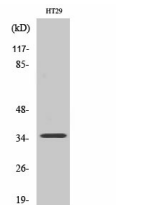
Recommended Dilution

WB: 1: 500 - 1: 2000

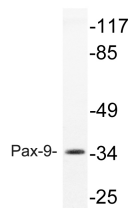
ELISA: 1: 20000

Not yet tested in other applications.

Images



Western Blot analysis of various cells using Pax-9 Polyclonal Antibody cells nucleus.



Western blot analysis of lysate from rat heart, using Pax-9 antibody.

Storage

-20°C for one year

501 Changsheng S Rd, Nanhu Dist, Jiaxing, Zhejiang, China

Tel: 86 21 31007137 | E-mail: save@bt-laboratory.com | www.bt-laboratory.com