

## Paxillin Polyclonal Antibody

### Description

<b>Product type</b>	Primary Antibody
<b>Code</b>	BT-AP06954
<b>Host</b>	Rabbit
<b>Isotype</b>	IgG
<b>Size</b>	20ul, 50ul, 100ul
<b>Immunogen</b>	The antiserum was produced against synthesized peptide derived from human Paxillin. AA range:144-193
<b>Mol wt</b>	64533
<b>Species reactivity</b>	Human, Mouse, Rat
<b>Clonality</b>	Polyclonal
<b>Recommended application</b>	WB, ELISA
<b>Concentration</b>	1 mg/ml
<b>Full name</b>	Paxillin Antibody
<b>Synonyms</b>	PXN; Paxillin

This product is for research use only, not for use in human, therapeutic or diagnostic procedure.

### Background

PXN (paxillin) encodes a cytoskeletal protein involved in actin-membrane attachment at sites of cell adhesion to the extracellular matrix (focal adhesion). Alternatively spliced transcript variants encoding different isoforms have been described for PXN. These isoforms exhibit different expression pattern, and have different biochemical, as well as physiological properties.

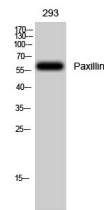
### Recommended Dilution

WB: 1: 500 - 1: 2000

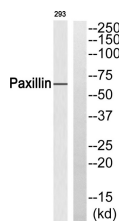
ELISA: 1: 10000

Not yet tested in other applications.

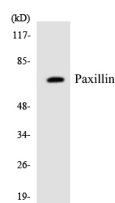
### Images



Western Blot analysis of 293 cells using Paxillin Polyclonal Antibody



Western blot analysis of Paxillin Antibody. The lane on the right is blocked with the Paxillin peptide.



Western blot analysis of the lysates from RAW264.7 cells using Paxillin antibody.

## Storage

-20°C for one year

501 Changsheng S Rd, Nanhu Dist, Jiaxing, Zhejiang, China

Tel: 86 21 31007137 | E-mail: [save@bt-laboratory.com](mailto:save@bt-laboratory.com) | [www.bt-laboratory.com](http://www.bt-laboratory.com)