

Paxillin Polyclonal Antibody

Description

Product type	Primary Antibody
Code	BT-AP06955
Host	Rabbit
Isotype	IgG
Size	20ul, 50ul, 100ul
Immunogen	The antiserum was produced against synthesized peptide derived from human Paxillin. AA range:238-287
Mol wt	64533
Species reactivity	Human, Mouse, Rat
Clonality	Polyclonal
Recommended application	WB, ELISA
Concentration	1 mg/ml
Full name	Paxillin Antibody
Synonyms	PXN; Paxillin

This product is for research use only, not for use in human, therapeutic or diagnostic procedure.

Background

PXN encodes a cytoskeletal protein involved in actin-membrane attachment at sites of cell adhesion to the extracellular matrix (focal adhesion). Alternatively spliced transcript variants encoding different isoforms have been described for PXN. These isoforms exhibit different expression pattern, and have different biochemical, as well as physiological properties.

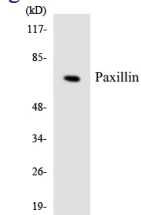
Recommended Dilution

WB: 1: 500 - 1: 2000

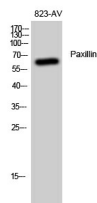
ELISA: 1: 10000

Not yet tested in other applications.

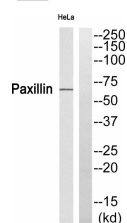
Images



Western blot analysis of the lysates from HepG2 cells using Paxillin antibody.



Western Blot analysis of 823-AV cells using Paxillin Polyclonal Antibody diluted at 1:500



Western blot analysis of Paxillin Antibody. The lane on the right is blocked with the Paxillin peptide.

Storage

-20°C for one year

501 Changsheng S Rd, Nanhu Dist, Jiaxing, Zhejiang, China

Tel: 86 21 31007137 | E-mail: save@bt-laboratory.com | www.bt-laboratory.com