

Paxillin Polyclonal Antibody

Description

Product type	Primary Antibody
Code	BT-AP06956
Host	Rabbit
Isotype	IgG
Size	20ul, 50ul, 100ul
Immunogen	The antiserum was produced against synthesized peptide derived from human Paxillin. AA range:15-64
Mol wt	64533
Species reactivity	Human, Mouse, Rat, Monkey
Clonality	Polyclonal
Recommended application	WB, IHC-p, IF, ELISA
Concentration	1 mg/ml
Full name	Paxillin Antibody
Synonyms	PXN; Paxillin

This product is for research use only, not for use in human, therapeutic or diagnostic procedure.

Background

PXN encodes a cytoskeletal protein involved in actin-membrane attachment at sites of cell adhesion to the extracellular matrix (focal adhesion). Alternatively spliced transcript variants encoding different isoforms have been described for PXN. These isoforms exhibit different expression pattern, and have different biochemical, as well as physiological properties.

Recommended Dilution

WB: 1: 500 - 1: 2000

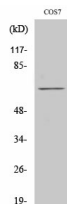
IHC: 1: 100 - 1: 300

IF: 1: 200 - 1: 1000

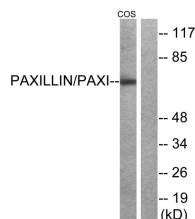
ELISA: 1: 20000

Not yet tested in other applications.

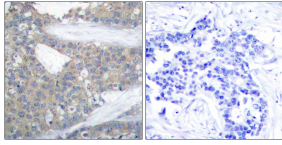
Images



Western Blot analysis of various cells using Paxillin Polyclonal Antibody diluted at 1:1000



Western blot analysis of lysates from COS-7 cells, treated with Estradiol 0.1 μM 20', using Paxillin Antibody. The lane on the right is blocked with the synthesized peptide.



Immunohistochemistry analysis of paraffin-embedded human breast carcinoma tissue, using Paxillin Antibody. The picture on the right is blocked with the synthesized peptide.

Storage

-20°C for one year

501 Changsheng S Rd, Nanhu Dist, Jiaxing, Zhejiang, China

Tel: 86 21 31007137 | E-mail: save@bt-laboratory.com | www.bt-laboratory.com