

PBFE Polyclonal Antibody

Description

Product type	Primary Antibody
Code	BT-AP06960
Host	Rabbit
Isotype	IgG
Size	20ul, 50ul, 100ul
Immunogen	The antiserum was produced against synthesized peptide derived from human EHHADH. AA range:476-525
Mol wt	79340
Species reactivity	Human, Rat
Clonality	Polyclonal
Recommended application	WB, IHC-p, ELISA
Concentration	1 mg/ml
Full name	PBFE Antibody
Synonyms	EHHADH; ECHD; Peroxisomal bifunctional enzyme; PBE; PBFE

This product is for research use only, not for use in human, therapeutic or diagnostic procedure.

Background

Enoyl-CoA hydratase and 3-hydroxyacyl CoA dehydrogenase by EHHADH is a bifunctional enzyme and is one of the four enzymes of the peroxisomal beta-oxidation pathway. The N-terminal region of the encoded protein contains enoyl-CoA hydratase activity while the C-terminal region contains 3-hydroxyacyl-CoA dehydrogenase activity. Defects in EHHADH are a cause of peroxisomal disorders such as Zellweger syndrome. Two transcript variants encoding different isoforms have been found for EHHADH.

Recommended Dilution

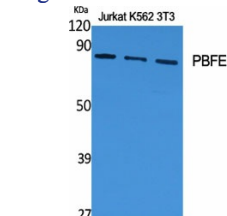
WB: 1: 500 - 1: 2000

IHC: 1: 100 - 1: 300

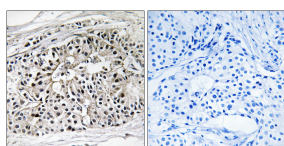
ELISA: 1: 10000

Not yet tested in other applications.

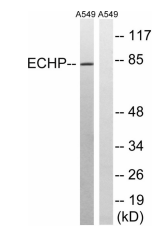
Images



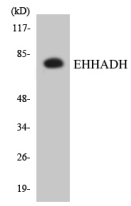
Western Blot analysis of various cells using PBFE Polyclonal Antibody



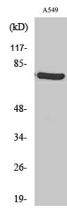
Immunohistochemistry analysis of paraffin-embedded human breast carcinoma tissue, using EHHADH Antibody. The picture on the right is blocked with the synthesized peptide.



Western blot analysis of lysates from A549 cells, using EHHADH Antibody. The lane on the right is blocked with the synthesized peptide.



Western blot analysis of the lysates from HepG2 cells using EHHADH antibody.



Western Blot analysis of A549 cells using PBF E Polyclonal Antibody

Storage

-20°C for one year

501 Changsheng S Rd, Nanhu Dist, Jiaxing, Zhejiang, China

Tel: 86 21 31007137 | E-mail: save@bt-laboratory.com | www.bt-laboratory.com