

PCAF (Acetyl Lys428) Polyclonal Antibody

Description

Product type	Primary Antibody
Code	BT-AP06966
Host	Rabbit
Isotype	IgG
Size	20ul, 50ul, 100ul
Immunogen	Synthesized acetyl-peptide derived from the human PCAF around the acetylation site of K428.
Mol wt	93013
Species reactivity	Human, Mouse
Clonality	Polyclonal
Recommended application	WB, ELISA
Concentration	1 mg/ml
Full name	PCAF (Acetyl Lys428) Antibody
Synonyms	KAT2B; PCAF; Histone acetyltransferase KAT2B; Histone acetyltransferase PCAF; Histone acetylase PCAF; Lysine acetyltransferase 2B; P300/CBP-associated factor; P/CAF

This product is for research use only, not for use in human, therapeutic or diagnostic procedure.

Background

CBP and p300 are large nuclear proteins that bind to many sequence-specific factors involved in cell growth and/or differentiation, including c-jun and the adenoviral oncoprotein E1A. lysine acetyltransferase 2B associates with p300/CBP. It has in vitro and in vivo binding activity with CBP and p300, and competes with E1A for binding sites in p300/CBP. It has histone acetyl transferase activity with core histones and nucleosome core particles, indicating that lysine acetyltransferase 2B plays a direct role in transcriptional regulation.

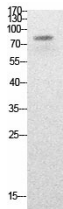
Recommended Dilution

WB: 1: 500 - 1: 2000

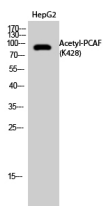
ELISA: 1: 20000

Not yet tested in other applications.

Images



Western Blot analysis of HepG2 cells using Acetyl-PCAF (K428) Polyclonal Antibody. Secondary antibody was diluted at 1:20000



Western Blot analysis of HepG2 cells using Acetyl-PCAF (K428) Polyclonal Antibody. Secondary antibody was diluted at 1:20000

Storage

-20°C for one year

501 Changsheng S Rd, Nanhu Dist, Jiaxing, Zhejiang, China

Tel: 86 21 31007137 | E-mail: save@bt-laboratory.com | www.bt-laboratory.com