

MDM2(Phospho Ser166) Polyclonal Antibody

Description

Product type	Primary Antibody
Code	BT-AP06974
Host	Rabbit
Isotype	IgG
Size	100ul, 50ul, 20ul
Immunogen	The antiserum was produced against synthesized peptide derived from human MDM2 around the phosphorylation site of Ser166. AA range:132-181
Mol wt	55233
Species reactivity	Human, Mouse, Monkey
Clonality	Polyclonal
Recommended application	WB, IHC-p, IF, ICC, ELISA
Concentration	1 mg/ml
Full name	E3 ubiquitin-protein ligase Mdm2
Synonyms	E3 ubiquitin-protein ligase Mdm2; MDM2; E3 ubiquitin-protein ligase Mdm2; Double minute 2 protein; Hdm2; Oncoprotein Mdm2; p53-binding protein Mdm2

This product is for research use only, not for use in human, therapeutic or diagnostic procedure.

Background

This gene encodes a nuclear-localized E3 ubiquitin ligase. The encoded protein can promote tumor formation by targeting tumor suppressor proteins, such as p53, for proteasomal degradation. This gene is itself transcriptionally-regulated by p53. Overexpression or amplification of this locus is detected in a variety of different cancers. There is a pseudogene for this gene on chromosome 2. Alternative splicing results in a multitude of transcript variants, many of which may be expressed only in tumor cells.

Recommended Dilution

WB: 1: 500 - 1: 2000

IHC-p: 1: 100 - 1: 300

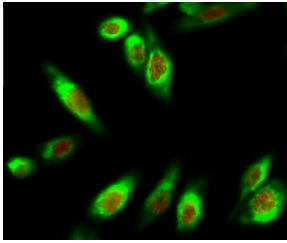
IF: 1: 200 - 1: 1000

ICC: 1: 200 - 1: 1000

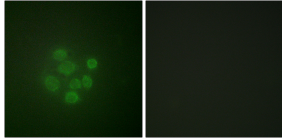
ELISA: 1: 5000

Not yet tested in other applications.

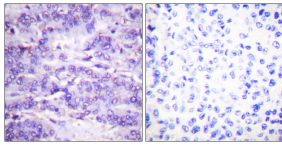
Images



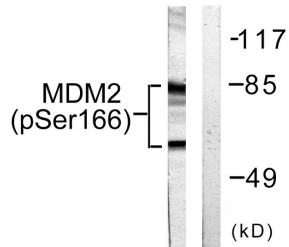
Immunofluorescence analysis of HeLa cell. MDM2 (phospho Ser166) Polyclonal Antibody(Red) was diluted at 1:200(4°C overnight). HAO1 Monoclonal Antibody(Mix)(Green) was diluted at 1:200(4°C overnight).



Immunofluorescence analysis of A549 cells, using MDM2 (Phospho-Ser166) Antibody. The picture on the right is blocked with the phospho peptide.



Immunohistochemistry analysis of paraffin-embedded human breast carcinoma, using MDM2 (Phospho-Ser166) Antibody. The picture on the right is blocked with the phospho peptide.



Western blot analysis of lysates from COS7 cells, using MDM2 (Phospho-Ser166) Antibody. The lane on the right is blocked with the phospho peptide.

Storage

-20°C for 1 year

501 Changsheng S Rd, Nanhu Dist, Jiaxing, Zhejiang, China

Tel: 86 21 31007137 | E-mail: save@bt-laboratory.com | www.bt-laboratory.com