

## PDE10A Polyclonal Antibody

### Description

<b>Product type</b>	Primary Antibody
<b>Code</b>	BT-AP06998
<b>Host</b>	Rabbit
<b>Isotype</b>	IgG
<b>Size</b>	20ul, 50ul, 100ul
<b>Immunogen</b>	The antiserum was produced against synthesized peptide derived from human PDE10A. AA range:21-70
<b>Mol wt</b>	88412
<b>Species reactivity</b>	Human, Rat
<b>Clonality</b>	Polyclonal
<b>Recommended application</b>	WB, ELISA
<b>Concentration</b>	1 mg/ml
<b>Full name</b>	PDE10A Antibody
<b>Synonyms</b>	PDE10A; cAMP and cAMP-inhibited cGMP 3'; 5'-cyclic phosphodiesterase 10A

This product is for research use only, not for use in human, therapeutic or diagnostic procedure.

### Background

The phosphodiesterase 10A encoded by PDE10A belongs to the cyclic nucleotide phosphodiesterase family. It plays a role in signal transduction by regulating the intracellular concentration of cyclic nucleotides. This protein can hydrolyze both cAMP and cGMP to the corresponding nucleoside 5' monophosphate, but has higher affinity for cAMP, and is more efficient with cAMP as substrate. Alternatively spliced transcript variants have been described for PDE10A.

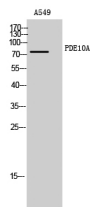
### Recommended Dilution

WB: 1: 500 - 1: 2000

ELISA: 1: 5000

Not yet tested in other applications.

### Images



Western Blot analysis of A549 cells using PDE10A Polyclonal Antibody

### Storage

-20°C for one year