

CBPC4 Rabbit Polyclonal Antibody

Description

Product type	Primary Antibody
Code	BT-AP07003
Host	Rabbit
Isotype	IgG
Size	100ul, 50ul, 20ul
Immunogen	Synthesized peptide derived from human CBPC4
Mol wt	117260
Species reactivity	Human, Mouse
Clonality	Polyclonal
Recommended application	WB
Concentration	1 mg/ml
Full name	CBPC4
Synonyms	CBPC4

This product is for research use only, not for use in human, therapeutic or diagnostic procedure.

Background

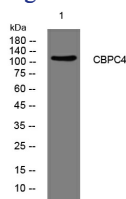
Polyglutamylation is a reversible posttranslational modification catalyzed by polyglutamylases that results in the addition of glutamate side chains on the modified protein. This gene encodes a glutamate decarboxylase that catalyzes the deglutamylation of polyglutamylated proteins. Mutations in this gene result in dominant late-onset Fuchs corneal dystrophy.

Recommended Dilution

WB: 1: 500 - 1: 2000

Not yet tested in other applications.

Images



Western blot analysis of lysates from K562 cells, primary antibody was diluted at 1:1000, 4°C overnight

Storage

-20°C for 1 year

501 Changsheng S Rd, Nanhu Dist, Jiaxing, Zhejiang, China

Tel: 86 21 31007137 | E-mail: save@bt-laboratory.com | www.bt-laboratory.com