

PDE4C Polyclonal Antibody

Description

Product type	Primary Antibody
Code	BT-AP07005
Host	Rabbit
Isotype	IgG
Size	20ul, 50ul, 100ul
Immunogen	The antiserum was produced against synthesized peptide derived from human PDE4C. AA range:291-340
Mol wt	79902
Species reactivity	Human, Mouse, Rat
Clonality	Polyclonal
Recommended application	WB, ELISA
Concentration	1 mg/ml
Full name	PDE4C Antibody
Synonyms	PDE4C; DPDE1; cAMP-specific 3'; 5'-cyclic phosphodiesterase 4C; DPDE1; PDE21

This product is for research use only, not for use in human, therapeutic or diagnostic procedure.

Background

Phosphodiesterase 4C encoded by PDE4C belongs to the cyclic nucleotide phosphodiesterase (PDE) family, and PDE4 subfamily. This PDE hydrolyzes the second messenger, cAMP, which is a regulator and mediator of a number of cellular responses to extracellular signals. Thus, by regulating the cellular concentration of cAMP, phosphodiesterase 4C plays a key role in many important physiological processes. Alternatively spliced transcript variants encoding different isoforms have been described for PDE4C.

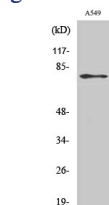
Recommended Dilution

WB: 1: 500 - 1: 2000

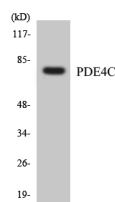
ELISA: 1: 5000

Not yet tested in other applications.

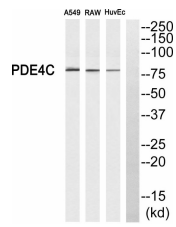
Images



Western Blot analysis of various cells using PDE4C Polyclonal Antibody



Western blot analysis of the lysates from HeLa cells using PDE4C antibody.



Western blot analysis of PDE4C Antibody. The lane on the right is blocked with the PDE4C peptide.

Storage

-20°C for one year

501 Changsheng S Rd, Nanhu Dist, Jiaxing, Zhejiang, China

Tel: 86 21 31007137 | E-mail: save@bt-laboratory.com | www.bt-laboratory.com