

## CACNG2 Polyclonal Antibody

### Description

<b>Product type</b>	Primary Antibody
<b>Code</b>	BT-AP07006
<b>Host</b>	Rabbit
<b>Isotype</b>	IgG
<b>Size</b>	20ul, 50ul, 100ul
<b>Immunogen</b>	Synthetic Peptide of CACNG2
<b>Mol wt</b>	N/A
<b>Species reactivity</b>	Human, Mouse, Rat
<b>Clonality</b>	Polyclonal
<b>Recommended application</b>	WB, IHC-p, IF
<b>Concentration</b>	N/A
<b>Full name</b>	Voltage-dependent calcium channel gamma-2 subunit
<b>Synonyms</b>	Voltage-dependent calcium channel gamma-2 subunit; Voltage-dependent calcium channel gamma-2 subunit; Neuronal voltage-gated calcium channel gamma-2 subunit; Transmembrane AMPAR regulatory protein gamma-2; TARP gamma-2

**This product is for research use only, not for use in human, therapeutic or diagnostic procedure.**

### Background

The protein encoded by this gene is a type I transmembrane AMPA receptor regulatory protein (TARP). TARPs regulate both trafficking and channel gating of the AMPA receptors. This gene is part of a functionally diverse eight-member protein subfamily of the PMP-22/EMP/MP20 family. This gene is a susceptibility locus for schizophrenia.

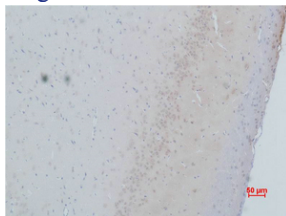
### Recommended Dilution

WB: 1: 1000 - 1: 2000

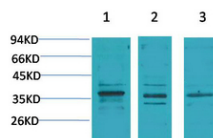
IHC: 1: 200 - 1: 500

Not yet tested in other applications.

### Images



Immunohistochemical analysis of paraffin-embedded Rat Brain Tissue using CACNG2 Polyclonal Antibody.



Western blot analysis of 1) Human Brain Tissue, 2) Mouse Brain Tissue, 3) Rat Brain Tissue using CACNG2 Polyclonal Antibody. Secondary antibody was diluted at 1:20000

### Storage

-20°C for 1 year

