

PDGF-A Polyclonal Antibody

Description

Product type	Primary Antibody
Code	BT-AP07009
Host	Rabbit
Isotype	IgG
Size	20ul, 50ul, 100ul
Immunogen	The antiserum was produced against synthesized peptide derived from human PDGF-A. AA range:105-154
Mol wt	24043
Species reactivity	Human, Mouse, Rat
Clonality	Polyclonal
Recommended application	WB, IHC-p, ELISA
Concentration	1 mg/ml
Full name	PDGF-A Antibody
Synonyms	PDGFA; PDGF1; Platelet-derived growth factor subunit A; PDGF subunit A; PDGF-1; Platelet-derived growth factor A chain; Platelet-derived growth factor alpha polypeptide

This product is for research use only, not for use in human, therapeutic or diagnostic procedure.

Background

PDGFA encodes a member of the protein family comprised of both platelet-derived growth factors (PDGF) and vascular endothelial growth factors (VEGF). Platelet derived growth factor subunit A preproprotein is proteolytically processed to generate platelet-derived growth factor subunit A, which can homodimerize, or alternatively, heterodimerize with the related platelet-derived growth factor subunit B. These proteins bind and activate PDGF receptor tyrosine kinases, which play a role in a wide range of developmental processes. Alternative splicing results in multiple transcript variants.

Recommended Dilution

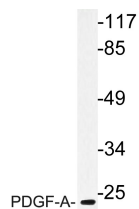
WB: 1: 500 - 1: 2000

IHC: 1: 100 - 1: 300

ELISA: 1: 40000

Not yet tested in other applications.

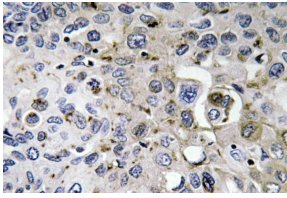
Images



Western blot analysis of lysate from Jurkat cells, using PDGF-A antibody.



Western Blot analysis of various cells using PDGF-A Polyclonal Antibody



Immunohistochemistry analysis of PDGF-A antibody in paraffin-embedded human lung carcinoma tissue.

Storage

-20°C for one year

501 Changsheng S Rd, Nanhu Dist, Jiaxing, Zhejiang, China

Tel: 86 21 31007137 | E-mail: save@bt-laboratory.com | www.bt-laboratory.com