

CBPC5 Rabbit Polyclonal Antibody

Description

Product type	Primary Antibody
Code	BT-AP07011
Host	Rabbit
Isotype	IgG
Size	100ul, 50ul, 20ul
Immunogen	Synthesized peptide derived from human CBPC5
Mol wt	97460
Species reactivity	Human, Mouse, Rat
Clonality	Polyclonal
Recommended application	WB
Concentration	1 mg/ml
Full name	CBPC5
Synonyms	CBPC5

This product is for research use only, not for use in human, therapeutic or diagnostic procedure.

Background

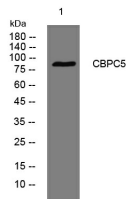
This gene encodes a metalloprotease involved in protein deglutamylation and a member of the peptidase M14 family of proteins. The encoded protein has been described as a "dual-functional" deglutamylase that can remove glutamate residues from both carboxyl termini and side chains of protein substrates. This deglutamylase activity may be important in antiviral immunity. Mutations in this gene are associated with retinitis pigmentosa.

Recommended Dilution

WB: 1: 500 - 1: 2000

Not yet tested in other applications.

Images



Western blot analysis of lysates from 3T3 cells, primary antibody was diluted at 1:1000, 4°C overnight

Storage

-20°C for 1 year