

## PDGFR- Alpha Polyclonal Antibody

### Description

<b>Product type</b>	Primary Antibody
<b>Code</b>	BT-AP07016
<b>Host</b>	Rabbit
<b>Isotype</b>	IgG
<b>Size</b>	20ul, 50ul, 100ul
<b>Immunogen</b>	The antiserum was produced against synthesized peptide derived from human PDGFR alpha. AA range:721-770
<b>Mol wt</b>	122670
<b>Species reactivity</b>	Human, Mouse, Rat
<b>Clonality</b>	Polyclonal
<b>Recommended application</b>	IHC-p, ELISA
<b>Concentration</b>	1 mg/ml
<b>Full name</b>	PDGFR-alpha Antibody
<b>Synonyms</b>	PDGFRA; PDGFR2; RHEPDGFRA; Platelet-derived growth factor receptor alpha; PDGF-R-alpha; PDGFR-alpha; Alpha platelet-derived growth factor receptor; Alpha-type platelet-derived growth factor receptor;

**This product is for research use only, not for use in human, therapeutic or diagnostic procedure.**

### Background

PDGFRA (platelet derived growth factor receptor alpha) encodes a cell surface tyrosine kinase receptor for members of the platelet-derived growth factor family. These growth factors are mitogens for cells of mesenchymal origin. The identity of the growth factor bound to a receptor monomer determines whether the functional receptor is a homodimer or a heterodimer, composed of both platelet-derived growth factor receptor alpha and beta polypeptides. Studies suggest that this gene plays a role in organ development, wound healing, and tumor progression. Mutations in PDGFRA have been associated with idiopathic hypereosinophilic syndrome, somatic and familial gastrointestinal stromal tumors, and a variety of other cancers.

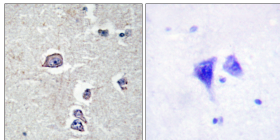
### Recommended Dilution

IHC: 1: 100 - 1: 300

ELISA: 1: 5000

Not yet tested in other applications.

### Images



Immunohistochemistry analysis of paraffin-embedded human brain tissue, using PDGFR alpha Antibody. The picture on the right is blocked with the synthesized peptide.

### Storage

-20°C for one year