

PDGFR-Beta Polyclonal Antibody

Description

Product type	Primary Antibody
Code	BT-AP07023
Host	Rabbit
Isotype	IgG
Size	20ul, 50ul, 100ul
Immunogen	Synthesized peptide derived from PDGFR- β . at AA range: 710-790
Mol wt	123968
Species reactivity	Human, Rat
Clonality	Polyclonal
Recommended application	WB, ELISA
Concentration	1 mg/ml
Full name	PDGFR-beta Antibody
Synonyms	PDGFRB; PDGFR; PDGFR1; Platelet-derived growth factor receptor beta; PDGF-R-beta; PDGFR-beta; Beta platelet-derived growth factor receptor; Beta-type platelet-derived growth factor receptor; CD140 ant

This product is for research use only, not for use in human, therapeutic or diagnostic procedure.

Background

PDGFRB encodes a cell surface tyrosine kinase receptor for members of the platelet-derived growth factor family. These growth factors are mitogens for cells of mesenchymal origin. The identity of the growth factor bound to a receptor monomer determines whether the functional receptor is a homodimer or a heterodimer, composed of both platelet-derived growth factor receptor alpha and beta polypeptides. This gene is flanked on chromosome 5 by the genes for granulocyte-macrophage colony-stimulating factor and macrophage-colony stimulating factor receptor; all three genes may be implicated in the 5-q syndrome. A translocation between chromosomes 5 and 12, that fuses this gene to that of the translocation, ETV6, leukemia gene, results in chronic myeloproliferative disorder with eosinophilia.

Recommended Dilution

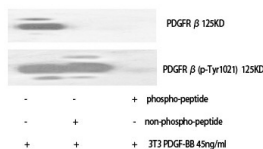
WB: 1: 500 - 1: 2000

ELISA: 1: 5000

Not yet tested in other applications.

Images

Western Blot analysis of various cells using PDGFR- β Polyclonal Antibody. Secondary antibody was diluted at 1:20000



Storage

-20°C for one year