

PDGFR-Beta Polyclonal Antibody

Description

Product type	Primary Antibody
Code	BT-AP07024
Host	Rabbit
Isotype	IgG
Size	20ul, 50ul, 100ul
Immunogen	The antiserum was produced against synthesized peptide derived from human PDGF Receptor beta. AA range:718-767
Mol wt	123968
Species reactivity	Human, Mouse, Rat
Clonality	Polyclonal
Recommended application	WB, IHC-p, IF, ELISA
Concentration	1 mg/ml
Full name	PDGFR-beta Antibody
Synonyms	PDGFRB; PDGFR; PDGFR1; Platelet-derived growth factor receptor beta; PDGF-R-beta; PDGFR-beta; Beta platelet-derived growth factor receptor; Beta-type platelet-derived growth factor receptor; CD140 ant

This product is for research use only, not for use in human, therapeutic or diagnostic procedure.

Background

PDGFRB encodes a cell surface tyrosine kinase receptor for members of the platelet-derived growth factor family. These growth factors are mitogens for cells of mesenchymal origin. The identity of the growth factor bound to a receptor monomer determines whether the functional receptor is a homodimer or a heterodimer, composed of both platelet-derived growth factor receptor alpha and beta polypeptides. PDGFRB is flanked on chromosome 5 by the genes for granulocyte-macrophage colony-stimulating factor and macrophage-colony stimulating factor receptor; all three genes may be implicated in the 5-q syndrome. A translocation between chromosomes 5 and 12, that fuses PDGFRB to that of the translocation, ETV6, leukemia gene, results in chronic myeloproliferative disorder with eosinophilia.

Recommended Dilution

WB: 1: 500 - 1: 2000

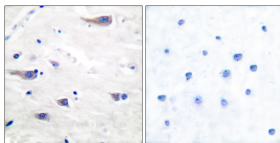
IHC: 1: 100 - 1: 300

IF: 1: 200 - 1: 1000

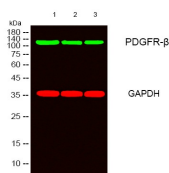
ELISA: 1: 40000

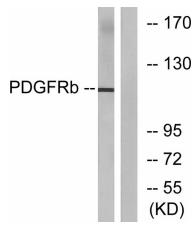
Not yet tested in other applications.

Images

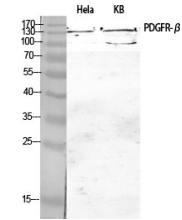


Immunohistochemistry analysis of paraffin-embedded human brain tissue, using PDGF Receptor beta Antibody. The picture on the right is blocked with the synthesized peptide.

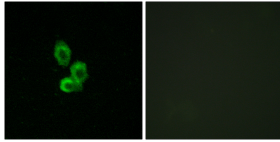




Western blot analysis of lysates from LOVO cells, using PDGF Receptor beta Antibody. The lane on the right is blocked with the synthesized peptide.



Western Blot analysis of various cells using PDGFR- β Polyclonal Antibody diluted at 1:1000



Immunofluorescence analysis of HepG2 cells, using PDGF Receptor beta Antibody. The picture on the right is blocked with the synthesized peptide.

Storage

-20°C for one year

501 Changsheng S Rd, Nanhu Dist, Jiaxing, Zhejiang, China

Tel: 86 21 31007137 | E-mail: save@bt-laboratory.com | www.bt-laboratory.com