

PDIK1L Polyclonal Antibody

Description

Product type	Primary Antibody
Code	BT-AP07026
Host	Rabbit
Isotype	IgG
Size	20ul, 50ul, 100ul
Immunogen	The antiserum was produced against synthesized peptide derived from human PDIK1L. AA range:101-150
Mol wt	38546
Species reactivity	Human, Mouse
Clonality	Polyclonal
Recommended application	WB, IHC-p, ELISA
Concentration	1 mg/ml
Full name	PDIK1L Antibody
Synonyms	PDIK1L; CLIK1L; Serine/threonine-protein kinase PDIK1L; PDLIM1-interacting kinase 1-like

This product is for research use only, not for use in human, therapeutic or diagnostic procedure.

Background

PDIK1L (PDLIM1 Interacting Kinase 1 Like) is a Protein Coding gene. GO annotations related to this gene include transferase activity, transferring phosphorus-containing groups and protein tyrosine kinase activity. An important paralog of this gene is ULK3.

Recommended Dilution

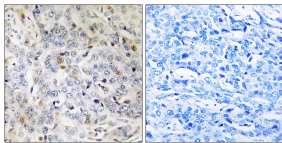
WB: 1: 500 - 1: 2000

IHC: 1: 100 - 1: 300

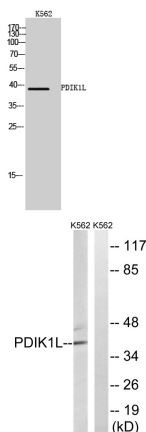
ELISA: 1: 40000

Not yet tested in other applications.

Images



Immunohistochemistry analysis of paraffin-embedded human breast carcinoma tissue, using PDIK1L Antibody. The picture on the right is blocked with the synthesized peptide.



Western Blot analysis of K562 cells using PDIK1L Polyclonal Antibody cells nucleus.

Western blot analysis of lysates from K562 cells, using PDIK1L Antibody. The lane on the right is blocked with the synthesized peptide.

Storage

-20°C for one year

501 Changsheng S Rd, Nanhu Dist, Jiaxing, Zhejiang, China

Tel: 86 21 31007137 | E-mail: save@bt-laboratory.com | www.bt-laboratory.com