

## PDK1 Polyclonal Antibody

### Description

<b>Product type</b>	Primary Antibody
<b>Code</b>	BT-AP07029
<b>Host</b>	Rabbit
<b>Isotype</b>	IgG
<b>Size</b>	20ul, 50ul, 100ul
<b>Immunogen</b>	The antiserum was produced against synthesized peptide derived from human PDK1. AA range:1-50
<b>Mol wt</b>	63152
<b>Species reactivity</b>	Human, Mouse, Rat, Monkey
<b>Clonality</b>	Polyclonal
<b>Recommended application</b>	WB, IHC-p, ELISA
<b>Concentration</b>	1 mg/ml
<b>Full name</b>	PDK1 Antibody
<b>Synonyms</b>	PDPK1; PDK1; 3-phosphoinositide-dependent protein kinase 1; hPDK1

This product is for research use only, not for use in human, therapeutic or diagnostic procedure.

### Background

PDPK1 (3-Phosphoinositide Dependent Protein Kinase 1) is a Protein Coding gene. Among its related pathways are Aldosterone-regulated sodium reabsorption and AMPK signaling pathway. GO annotations related to this gene include transferase activity, transferring phosphorus-containing groups and protein tyrosine kinase activity.

### Recommended Dilution

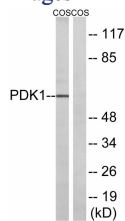
WB: 1: 500 - 1: 2000

IHC: 1: 100 - 1: 300

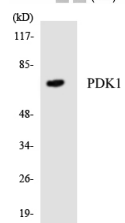
ELISA: 1: 5000

Not yet tested in other applications.

### Images



Western blot analysis of lysates from COS cells, using PDK1 Antibody. The lane on the right is blocked with the synthesized peptide.



Western blot analysis of the lysates from RAW264.7 cells using PDK1 antibody.

## Storage

-20°C for one year

501 Changsheng S Rd, Nanhu Dist, Jiaxing, Zhejiang, China

Tel: 86 21 31007137 | E-mail: [save@bt-laboratory.com](mailto:save@bt-laboratory.com) | [www.bt-laboratory.com](http://www.bt-laboratory.com)