

Calcitonin Polyclonal Antibody

Description

Product type	Primary Antibody
Code	BT-AP07033
Host	Rabbit
Isotype	IgG
Size	20ul, 50ul, 100ul
Immunogen	The antiserum was produced against synthesized peptide derived from human Calcitonin. AA range:29-78
Mol wt	13899
Species reactivity	Human, Rat, Mouse
Clonality	Polyclonal
Recommended application	IHC-p, IF, ELISA
Concentration	1 mg/ml
Full name	Calcitonin gene-related peptide 1
Synonyms	Calcitonin gene-related peptide 1; CALCA; CALC1; Calcitonin gene-related peptide 1; Alpha-type CGRP; Calcitonin gene-related peptide I; CGRP-I; CALCA; CALC1; Calcitonin

This product is for research use only, not for use in human, therapeutic or diagnostic procedure.

Background

CALCA (calcitonin related polypeptide alpha) encodes the peptide hormones calcitonin, calcitonin gene-related peptide and katacalcin by tissue-specific alternative RNA splicing of the gene transcripts and cleavage of inactive precursor proteins. Calcitonin is involved in calcium regulation and acts to regulate phosphorus metabolism. Calcitonin gene-related peptide functions as a vasodilator and as an antimicrobial peptide while katacalcin is a calcium-lowering peptide. Multiple transcript variants encoding different isoforms have been found for CALCA.

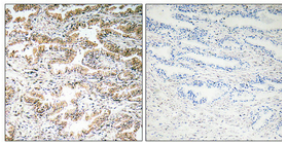
Recommended Dilution

IHC-p: 1: 100 - 1: 300

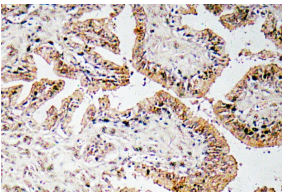
ELISA: 1: 10000

Not yet tested in other applications.

Images



Immunohistochemical analysis of paraffin-embedded Human prostate cancer. Antibody was diluted at 1:100(4°C overnight). High-pressure and temperature Tris-EDTA,pH8.0 was used for antigen retrieval. Negative control (right) obtained from antibody was pre-absorbed by immunogen peptide.



Immunohistochemistry analysis of Calcitonin antibody in paraffin-embedded human prostate carcinoma tissue.

Storage

-20°C for 1 year

