

## PDXDC1 Polyclonal Antibody

### Description

<b>Product type</b>	Primary Antibody
<b>Code</b>	BT-AP07040
<b>Host</b>	Rabbit
<b>Isotype</b>	IgG
<b>Size</b>	20ul, 50ul, 100ul
<b>Immunogen</b>	The antiserum was produced against synthesized peptide derived from human PDXDC1. AA range:677-726
<b>Mol wt</b>	86707
<b>Species reactivity</b>	Human, Mouse, Rat
<b>Clonality</b>	Polyclonal
<b>Recommended application</b>	WB, IHC-p, ELISA
<b>Concentration</b>	1 mg/ml
<b>Full name</b>	PDXDC1 Antibody
<b>Synonyms</b>	PDXDC1; KIAA0251; Pyridoxal-dependent decarboxylase domain-containing protein 1

**This product is for research use only, not for use in human, therapeutic or diagnostic procedure.**

### Background

PDXDC1 (Pyridoxal-Dependent Decarboxylase Domain Containing 1) is a Protein Coding gene. Gene Ontology (GO) annotations related to PDXDC1 include pyridoxal phosphate binding and carboxy-lyase activity.

### Recommended Dilution

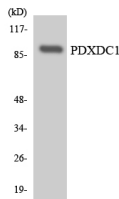
WB: 1: 500 - 1: 2000

IHC: 1: 100 - 1: 300

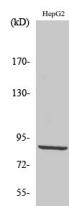
ELISA: 1: 10000

Not yet tested in other applications.

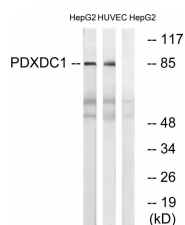
### Images



Western blot analysis of the lysates from HeLa cells using PDXDC1 antibody.



Western Blot analysis of various cells using PDXDC1 Polyclonal Antibody



Western blot analysis of lysates from HepG2 and HUVEC cells, using PDXDC1 Antibody. The lane on the right is blocked with the synthesized peptide.

## Storage

-20°C for one year

501 Changsheng S Rd, Nanhu Dist, Jiaxing, Zhejiang, China

Tel: 86 21 31007137 | E-mail: [save@bt-laboratory.com](mailto:save@bt-laboratory.com) | [www.bt-laboratory.com](http://www.bt-laboratory.com)