

## PDZK3 Polyclonal Antibody

### Description

Product type	Primary Antibody
Code	BT-AP07042
Host	Rabbit
Isotype	IgG
Size	20ul, 50ul, 100ul
Immunogen	The antiserum was produced against synthesized peptide derived from human PDZD2. AA range:51-100
Mol wt	301641
Species reactivity	Human, Mouse, Rat
Clonality	Polyclonal
Recommended application	IHC-p, IF, ELISA
Concentration	1 mg/ml
Full name	PDZK3 Antibody
Synonyms	PDZD2; AIPC; KIAA0300; PDZK3; PDZ domain-containing protein 2; Activated in prostate cancer protein; PDZ domain-containing protein 3

This product is for research use only, not for use in human, therapeutic or diagnostic procedure.

### Background

The PDZ domain containing 2 encoded by PDZD2 contains six PDZ domains and shares sequence similarity with pro-interleukin-16 (pro-IL-16). Like pro-IL-16, the encoded protein localizes to the endoplasmic reticulum and is thought to be cleaved by a caspase to produce a secreted peptide containing two PDZ domains. In addition, this gene is upregulated in primary prostate tumors and may be involved in the early stages of prostate tumorigenesis.

### Recommended Dilution

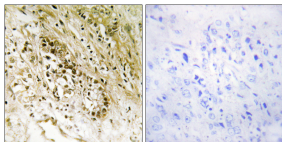
IHC: 1: 100 - 1: 300

IF: 1: 200 - 1: 1000

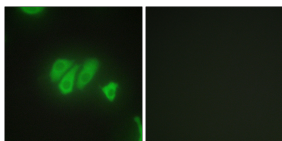
ELISA: 1: 10000

Not yet tested in other applications.

### Images



Immunohistochemistry analysis of paraffin-embedded human heart tissue, using PDZD2 Antibody. The picture on the right is blocked with the synthesized peptide.



Immunofluorescence analysis of HepG2 cells, using PDZD2 Antibody. The picture on the right is blocked with the synthesized peptide.

### Storage

-20°C for one year