

## PEA-15 Polyclonal Antibody

### Description

Product type	Primary Antibody
Code	BT-AP07044
Host	Rabbit
Isotype	IgG
Size	20ul, 50ul, 100ul
Immunogen	The antiserum was produced against synthesized peptide derived from human PEA-15. AA range:70-119
Mol wt	15040
Species reactivity	Human, Mouse, Rat
Clonality	Polyclonal
Recommended application	IHC-p, WB, ELISA
Concentration	1 mg/ml
Full name	PEA-15 Antibody
Synonyms	PEA15; Astrocytic phosphoprotein PEA-15; 15 kDa phosphoprotein enriched in astrocytes; Phosphoprotein enriched in diabetes; PED

This product is for research use only, not for use in human, therapeutic or diagnostic procedure.

### Background

PEA15 (phosphoprotein enriched in astrocytes 15) encodes a death effector domain-containing protein that functions as a negative regulator of apoptosis. The encoded protein is an endogenous substrate for protein kinase C. This protein is also overexpressed in type 2 diabetes mellitus, where it may contribute to insulin resistance in glucose uptake. Alternative splicing results in multiple transcript variants.

### Recommended Dilution

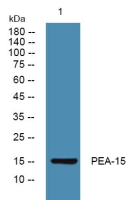
WB: 1: 500 - 2000

ELISA: 1: 5000

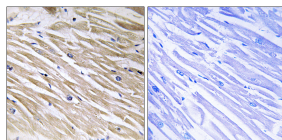
IHC: 1: 100 - 1: 300

Not yet tested in other applications.

### Images



Western blot analysis of lysates from Jarkat cells, primary antibody was diluted at 1:1000, 4° over night



Immunohistochemistry analysis of paraffin-embedded human heart tissue, using PEA-15 Antibody. The picture on the right is blocked with the synthesized peptide.

### Storage

-20°C for one year

501 Changsheng S Rd, Nanhu Dist, Jiaxing, Zhejiang, China

Tel: 86 21 31007137 | E-mail: [save@bt-laboratory.com](mailto:save@bt-laboratory.com) | [www.bt-laboratory.com](http://www.bt-laboratory.com)