

## PEA-15 Polyclonal Antibody

### Description

Product type	Primary Antibody
Code	BT-AP07045
Host	Rabbit
Isotype	IgG
Size	20ul, 50ul, 100ul
Immunogen	The antiserum was produced against synthesized peptide derived from human PEA15. AA range:61-110
Mol wt	15040
Species reactivity	Human, Mouse, Rat
Clonality	Polyclonal
Recommended application	IF, ELISA
Concentration	1 mg/ml
Full name	PEA-15 Antibody
Synonyms	PEA15; Astrocytic phosphoprotein PEA-15; 15 kDa phosphoprotein enriched in astrocytes; Phosphoprotein enriched in diabetes; PED

This product is for research use only, not for use in human, therapeutic or diagnostic procedure.

### Background

PEA15 (phosphoprotein enriched in astrocytes 15) encodes a death effector domain-containing protein that functions as a negative regulator of apoptosis. The encoded protein is an endogenous substrate for protein kinase C. This protein is also overexpressed in type 2 diabetes mellitus, where it may contribute to insulin resistance in glucose uptake. Alternative splicing results in multiple transcript variants.

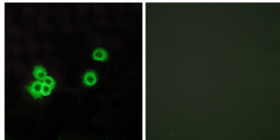
### Recommended Dilution

IF: 1: 200 - 1: 1000

ELISA: 1: 5000

Not yet tested in other applications.

### Images



Immunofluorescence analysis of MCF7 cells, using PEA15 Antibody. The picture on the right is blocked with the synthesized peptide.

### Storage

-20°C for one year