

PEDF Polyclonal Antibody

Description

Product type	Primary Antibody
Code	BT-AP07051
Host	Rabbit
Isotype	IgG
Size	20ul, 50ul, 100ul
Immunogen	The antiserum was produced against synthesized peptide derived from human PEDF. AA range:258-307
Mol wt	46342
Species reactivity	Human, Mouse, Rat
Clonality	Polyclonal
Recommended application	IHC-p, WB, ELISA
Concentration	1 mg/ml
Full name	PEDF Antibody
Synonyms	SERPINF1; PEDF; PIG35; Pigment epithelium-derived factor; PEDF; Cell proliferation-inducing gene 35 protein; EPC-1; Serpin F1

This product is for research use only, not for use in human, therapeutic or diagnostic procedure.

Background

SERPINF1 (serpin family F member 1) encodes a member of the serpin family that does not display the serine protease inhibitory activity shown by many of the other serpin proteins. The encoded protein is secreted and strongly inhibits angiogenesis. In addition, this protein is a neurotrophic factor involved in neuronal differentiation in retinoblastoma cells. Mutations in this gene were found in individuals with osteogenesis imperfecta, type VI.

Recommended Dilution

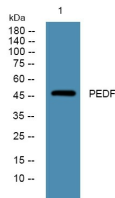
WB: 1: 500 - 2000

ELISA: 1: 10000

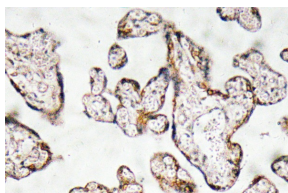
IHC: 1: 100 - 1: 300

Not yet tested in other applications.

Images



Western blot analysis of lysates from A431 cells, primary antibody was diluted at 1:1000, 4^oover night



Immunohistochemistry analysis of PEDF antibody in paraffin-embedded human prostate carcinoma tissue.

Storage

-20°C for one year

501 Changsheng S Rd, Nanhu Dist, Jiaxing, Zhejiang, China

Tel: 86 21 31007137 | E-mail: save@bt-laboratory.com | www.bt-laboratory.com