

PEPC Polyclonal Antibody

Description

Product type	Primary Antibody
Code	BT-AP07055
Host	Rabbit
Isotype	IgG
Size	20ul, 50ul, 100ul
Immunogen	Synthetic Peptide of PEPC
Mol wt	42426
Species reactivity	Plants
Clonality	Polyclonal
Recommended application	WB
Concentration	1 mg/ml
Full name	PEPC Antibody
Synonyms	PGC; Gastricsin; Pepsinogen C

This product is for research use only, not for use in human, therapeutic or diagnostic procedure.

Background

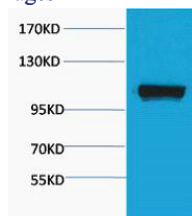
PGC (progastricsin) encodes an aspartic proteinase that belongs to the peptidase family A1. The encoded protein is a digestive enzyme that is produced in the stomach and constitutes a major component of the gastric mucosa. This protein is also secreted into the serum. This protein is synthesized as an inactive zymogen that includes a highly basic prosegment. This enzyme is converted into its active mature form at low pH by sequential cleavage of the prosegment that is carried out by the enzyme itself. Polymorphisms in PGC are associated with susceptibility to gastric cancers. Serum levels of this enzyme are used as a biomarker for certain gastric diseases including Helicobacter pylori related gastritis. Alternate splicing results in multiple transcript variants. A pseudogene of PGC is found on chromosome 1

Recommended Dilution

WB: 1: 2000 - 5000

Not yet tested in other applications.

Images



Western blot analysis of Maize, diluted at 1:4000. Secondary antibody was diluted at 1:20000

Storage

-20°C for one year