

Pepsin A Polyclonal Antibody

Description

| | |
|--------------------------------|--|
| Product type | Primary Antibody |
| Code | BT-AP07057 |
| Host | Rabbit |
| Isotype | IgG |
| Size | 20ul, 50ul, 100ul |
| Immunogen | The antiserum was produced against synthesized peptide derived from human Pepsin A. AA range:258-307 |
| Mol wt | 41977 |
| Species reactivity | Human |
| Clonality | Polyclonal |
| Recommended application | WB, IHC-p, ELISA |
| Concentration | 1 mg/ml |
| Full name | Pepsin A Antibody |
| Synonyms | Pepsin A; PGA3; PGA4; PGA5 |

This product is for research use only, not for use in human, therapeutic or diagnostic procedure.

Background

PGA5 (pepsinogen 5, group I (pepsinogen A)) encodes a protein precursor of the digestive enzyme pepsin, a member of the peptidase A1 family of endopeptidases. The encoded precursor is secreted by gastric chief cells and undergoes autocatalytic cleavage in acidic conditions to form the active enzyme, which functions in the digestion of dietary proteins. PGA5 is found in a cluster of related genes on chromosome 11, each of which encodes one of multiple pepsinogens. Pepsinogen levels in serum may serve as a biomarker for atrophic gastritis and gastric cancer.

Recommended Dilution

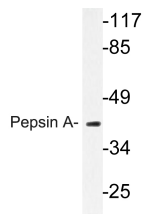
WB: 1: 500 - 1: 2000

IHC: 1: 100 - 1: 300

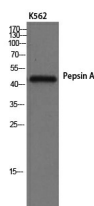
ELISA: 1: 10000

Not yet tested in other applications.

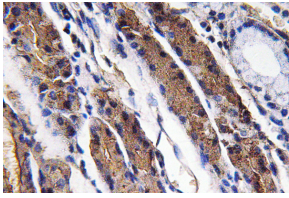
Images



Western blot analysis of lysate from K562 cells, using Pepsin A antibody.



Western Blot analysis of K562 cells using Pepsin A Polyclonal Antibody



Immunohistochemistry analysis of Pepsin A antibody in paraffin-embedded human lung carcinoma tissue.

Storage

-20°C for one year

501 Changsheng S Rd, Nanhu Dist, Jiaxing, Zhejiang, China

Tel: 86 21 31007137 | E-mail: save@bt-laboratory.com | www.bt-laboratory.com