

PEPT1 Polyclonal Antibody

Description

Product type	Primary Antibody
Code	BT-AP07059
Host	Rabbit
Isotype	IgG
Size	20ul, 50ul, 100ul
Immunogen	The antiserum was produced against synthesized peptide derived from human SLC15A1. AA range:225-274
Mol wt	78806
Species reactivity	Human, Mouse, Rat
Clonality	Polyclonal
Recommended application	WB, ELISA
Concentration	1 mg/ml
Full name	PEPT1 Antibody
Synonyms	SLC15A1; PEPT1; Solute carrier family 15 member 1; Intestinal H(+)/peptide cotransporter; Oligopeptide transporter; small intestine isoform; Peptide transporter 1

This product is for research use only, not for use in human, therapeutic or diagnostic procedure.

Background

SLC15A1 (solute carrier family 15 member 1) encodes an intestinal hydrogen peptide cotransporter that is a member of the solute carrier family 15. The encoded protein is localized to the brush border membrane of the intestinal epithelium and mediates the uptake of di- and tripeptides from the lumen into the enterocytes. This protein plays an important role in the uptake and digestion of dietary proteins. This protein also facilitates the absorption of numerous peptidomimetic drugs.

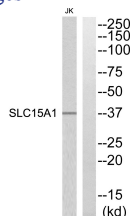
Recommended Dilution

WB: 1: 500 - 1: 2000

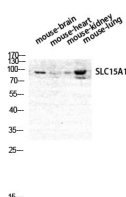
ELISA: 1: 40000

Not yet tested in other applications.

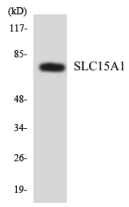
Images



Western blot analysis of SLC15A1 Antibody. The lane on the right is blocked with the SLC15A1 peptide.



Western Blot analysis of MOUSE-BRAIN MOUSE-HEART MOUSE-LUNG MOUSE-KIDNEY cells using PEPT1 Polyclonal Antibody diluted at 1:1000



Western blot analysis of the lysates from HeLa cells using SLC15A1 antibody.

Storage

-20°C for one year

501 Changsheng S Rd, Nanhu Dist, Jiaxing, Zhejiang, China

Tel: 86 21 31007137 | E-mail: save@bt-laboratory.com | www.bt-laboratory.com