

Mnk1(Phospho Thr255) Polyclonal Antibody

Description

Product type	Primary Antibody
Code	BT-AP07060
Host	Rabbit
Isotype	IgG
Size	100ul, 50ul, 20ul
Immunogen	The antiserum was produced against synthesized peptide derived from human MNK1 around the phosphorylation site of Thr255. AA range:221-270
Mol wt	51342
Species reactivity	Human, Mouse, Rat
Clonality	Polyclonal
Recommended application	WB, ELISA
Concentration	1 mg/ml
Full name	MAP kinase-interacting serine/threonine-protein kinase 1
Synonyms	MAP kinase-interacting serine/threonine-protein kinase 1; MKNK1; MNK1; MAP kinase-interacting serine/threonine-protein kinase 1; MAP kinase signal-integrating kinase 1; MAPK signal-integrating kinase 1; Mnk1

This product is for research use only, not for use in human, therapeutic or diagnostic procedure.

Background

This gene encodes a Ser/Thr protein kinase that interacts with, and is activated by ERK1 and p38 mitogen-activated protein kinases, and thus may play a role in the response to environmental stress and cytokines. This kinase may also regulate transcription by phosphorylating eIF4E via interaction with the C-terminal region of eIF4G. Alternatively spliced transcript variants have been noted for this gene.

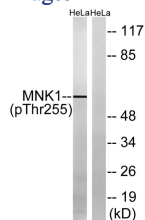
Recommended Dilution

WB: 1: 500 - 1: 2000

ELISA: 1: 20000

Not yet tested in other applications.

Images



Western blot analysis of lysates from HeLa cells treated with Adriamycin 0.5ug/ml 24h, using MNK1 (Phospho-Thr255) Antibody. The lane on the right is blocked with the phospho peptide.

Storage

-20°C for 1 year