

Per2 Polyclonal Antibody

Description

| | |
|--------------------------------|--|
| Product type | Primary Antibody |
| Code | BT-AP07061 |
| Host | Rabbit |
| Isotype | IgG |
| Size | 20ul, 50ul, 100ul |
| Immunogen | The antiserum was produced against synthesized peptide derived from human Period Circadian Protein 2. AA range:636-685 |
| Mol wt | 136579 |
| Species reactivity | Human, Mouse |
| Clonality | Polyclonal |
| Recommended application | IHC-p, IF, ELISA |
| Concentration | 1 mg/ml |
| Full name | Per2 Antibody |
| Synonyms | PER2; KIAA0347; Period circadian protein homolog 2; hPER2; Circadian clock protein PERIOD 2 |

This product is for research use only, not for use in human, therapeutic or diagnostic procedure.

Background

PER2 (period circadian clock 2) is a member of the Period family of genes and is expressed in a circadian pattern in the suprachiasmatic nucleus, the primary circadian pacemaker in the mammalian brain. Genes in this family encode components of the circadian rhythms of locomotor activity, metabolism, and behavior. PER2 is upregulated by CLOCK/ARNTL heterodimers but then represses this upregulation in a feedback loop using PER/CRY heterodimers to interact with CLOCK/ARNTL. Polymorphisms in PER2 may increase the risk of getting certain cancers and have been linked to sleep disorders.

Recommended Dilution

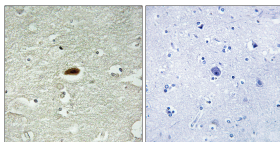
IHC: 1: 100 - 1: 300

IF: 1: 200 - 1: 1000

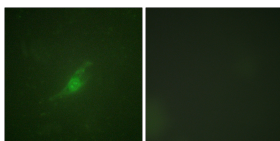
ELISA: 1: 5000

Not yet tested in other applications.

Images



Immunohistochemistry analysis of paraffin-embedded human brain tissue, using Period Circadian Protein 2 Antibody. The picture on the right is blocked with the synthesized peptide.



Immunofluorescence analysis of NIH/3T3 cells, using Period Circadian Protein 2 Antibody. The picture on the right is blocked with the synthesized peptide.

Storage

-20°C for one year

501 Changsheng S Rd, Nanhu Dist, Jiaxing, Zhejiang, China

Tel: 86 21 31007137 | E-mail: save@bt-laboratory.com | www.bt-laboratory.com