

Perforin 1 Polyclonal Antibody

Description

Product type	Primary Antibody
Code	BT-AP07063
Host	Rabbit
Isotype	IgG
Size	20ul, 50ul, 100ul
Immunogen	The antiserum was produced against synthesized peptide derived from the C-terminal region of human PRF1. AA range:451-500
Mol wt	61377
Species reactivity	Human
Clonality	Polyclonal
Recommended application	WB, IHC, ELISA
Concentration	1 mg/ml
Full name	Perforin 1 Antibody
Synonyms	Perforin-1 (P1) (Cytolysin) (Lymphocyte pore-forming protein) (PFP)

This product is for research use only, not for use in human, therapeutic or diagnostic procedure.

Background

The protein encoded by PRF1 (perforin 1) has structural and functional similarities to complement component 9 (C9). Like C9, this protein creates transmembrane tubules and is capable of lysing non-specifically a variety of target cells. This protein is one of the main cytolytic proteins of cytolytic granules, and it is known to be a key effector molecule for T-cell- and natural killer-cell-mediated cytotoxicity. Defects in PRF1 cause familial hemophagocytic lymphohistiocytosis type 2 (HPLH2), a rare and lethal autosomal recessive disorder of early childhood. Alternative splicing results in multiple transcript variants encoding the same protein.

Recommended Dilution

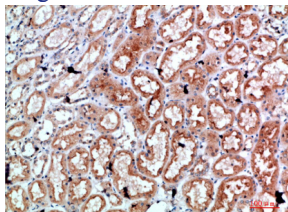
WB: 1: 500 - 2000

IHC: 1: 50 - 200

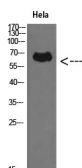
ELISA: 1: 10000 - 20000

Not yet tested in other applications.

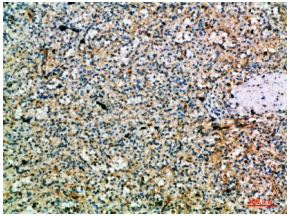
Images



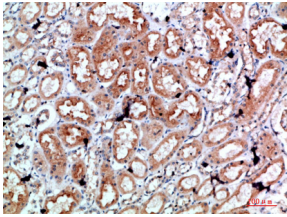
Immunohistochemical analysis of paraffin-embedded human-kidney, antibody was diluted at 1:200



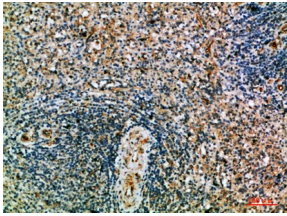
Western Blot analysis of HeLa cells using Perforin 1 Polyclonal Antibody diluted at 1:500. Secondary antibody was diluted at 1:20000



Immunohistochemical analysis of paraffin-embedded human-spleen, antibody was diluted at 1:200



Immunohistochemical analysis of paraffin-embedded human-kidney, antibody was diluted at 1:200



Immunohistochemical analysis of paraffin-embedded human-spleen, antibody was diluted at 1:200

Storage

-20°C for one year

501 Changsheng S Rd, Nanhu Dist, Jiaxing, Zhejiang, China

Tel: 86 21 31007137 | E-mail: save@bt-laboratory.com | www.bt-laboratory.com