

Periphilin 1 Polyclonal Antibody

Description

Product type	Primary Antibody
Code	BT-AP07064
Host	Rabbit
Isotype	IgG
Size	20ul, 50ul, 100ul
Immunogen	The antiserum was produced against synthesized peptide derived from human PPHLN. AA range:71-120
Mol wt	52737
Species reactivity	Human, Mouse
Clonality	Polyclonal
Recommended application	WB, IHC-p, ELISA
Concentration	1 mg/ml
Full name	Periphilin 1 Antibody
Synonyms	PPHLN1; HSPC206; HSPC232; Periphilin-1; Gastric cancer antigen Ga50

This product is for research use only, not for use in human, therapeutic or diagnostic procedure.

Background

Periphilin 1 encoded by PPHLN1 is one of the several proteins that become sequentially incorporated into the cornified cell envelope during the terminal differentiation of keratinocyte at the outer layers of epidermis. Periphilin 1 interacts with periplakin, which is known as a precursor of the cornified cell envelope. The cellular localization pattern and insolubility of periphilin 1 suggest that it may play a role in epithelial differentiation and contribute to epidermal integrity and barrier formation. Multiple alternatively spliced transcript variants encoding distinct isoforms have been observed.

Recommended Dilution

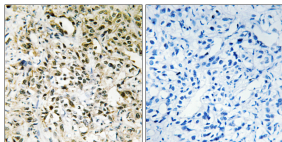
WB: 1: 500 - 1: 2000

IHC: 1: 100 - 1: 300

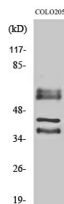
ELISA: 1: 5000

Not yet tested in other applications.

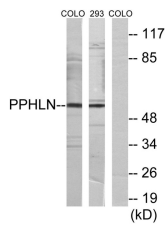
Images



Immunohistochemistry analysis of paraffin-embedded human liver carcinoma tissue, using PPHLN Antibody. The picture on the right is blocked with the synthesized peptide.



Western Blot analysis of various cells using Periphilin 1 Polyclonal Antibody



Western blot analysis of lysates from COLO and 293 cells, using PPHLN Antibody. The lane on the right is blocked with the synthesized peptide.

Storage

-20°C for one year

501 Changsheng S Rd, Nanhu Dist, Jiaxing, Zhejiang, China

Tel: 86 21 31007137 | E-mail: save@bt-laboratory.com | www.bt-laboratory.com