

Peropsin Polyclonal Antibody

Description

Product type	Primary Antibody
Code	BT-AP07067
Host	Rabbit
Isotype	IgG
Size	20ul, 50ul, 100ul
Immunogen	The antiserum was produced against synthesized peptide derived from human RRH. AA range:201-250
Mol wt	37423
Species reactivity	Human
Clonality	Polyclonal
Recommended application	WB, IHC-p, ELISA
Concentration	1 mg/ml
Full name	Peropsin Antibody
Synonyms	RRH; Visual pigment-like receptor peropsin

This product is for research use only, not for use in human, therapeutic or diagnostic procedure.

Background

Opsins are members of the guanine nucleotide-binding protein (G protein)-coupled receptor superfamily. RRH belongs to the seven-exon subfamily of mammalian opsin genes that includes opsin 5 and retinal G protein coupled receptor.

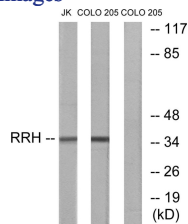
Recommended Dilution

WB: 1: 500 - 1: 2000

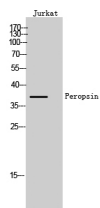
ELISA: 1: 10000

Not yet tested in other applications.

Images



Western blot analysis of lysates from Jurkat and COLO cells, using RRH Antibody. The lane on the right is blocked with the synthesized peptide.



Western Blot analysis of Jurkat cells using Peropsin Polyclonal Antibody

Storage

-20°C for one year