

CANB2 Polyclonal Antibody

Description

Product type	Primary Antibody
Code	BT-AP07079
Host	Rabbit
Isotype	IgG
Size	20ul, 50ul, 100ul
Immunogen	Synthesized peptide derived from part region of human protein
Mol wt	N/A
Species reactivity	Human, Rat
Clonality	Polyclonal
Recommended application	WB, ELISA
Concentration	1 mg/ml
Full name	Calcineurin subunit B type 2
Synonyms	Calcineurin subunit B type 2 ;Calcineurin B-like protein;CBLP;Calcineurin BII;CNBII;PPP3R1-like;Protein phosphatase 2B regulatory subunit 2;Protein phosphatase 3 regulatory subunit B beta

This product is for research use only, not for use in human, therapeutic or diagnostic procedure.

Background

Regulatory subunit of calcineurin, a calcium-dependent, calmodulin stimulated protein phosphatase. Confers calcium sensitivity.,miscellaneous:This protein has four functional calcium-binding sites.,Belongs to the calcineurin regulatory subunit family.,Contains 4 EF-hand domains.,subunit:Composed of a catalytic subunit (A) and a regulatory subunit (B),tissue specificity:Testis specific.,

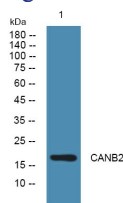
Recommended Dilution

WB: 1: 500 - 1: 2000

ELISA: 1: 5000 - 1: 20000

Not yet tested in other applications.

Images



Western blot analysis of lysates from KB cells, primary antibody was diluted at 1:1000, 4°C overnight

Storage

-20°C for 1 year