

CANT1 Polyclonal Antibody

Description

Product type	Primary Antibody
Code	BT-AP07080
Host	Rabbit
Isotype	IgG
Size	20ul, 50ul, 100ul
Immunogen	Synthesized peptide derived from part region of human protein
Mol wt	N/A
Species reactivity	Human, Mouse
Clonality	Polyclonal
Recommended application	WB, ELISA
Concentration	1 mg/ml
Full name	Soluble calcium-activated nucleotidase 1
Synonyms	Soluble calcium-activated nucleotidase 1 ;SCAN-1;EC 3.6.1.6;Apyrase homolog;Putative MAPK-activating protein PM09;Putative NF-kappa-B-activating protein 107

This product is for research use only, not for use in human, therapeutic or diagnostic procedure.

Background

This protein encoded by this gene belongs to the apyrase family. It functions as a calcium-dependent nucleotidase with a preference for UDP. Mutations in this gene are associated with Desbuquois dysplasia with hand anomalies. Alternatively spliced transcript variants have been noted for this gene.

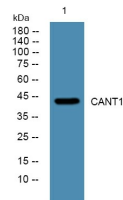
Recommended Dilution

WB: 1: 500 - 1: 2000

ELISA: 1: 5000 - 1: 20000

Not yet tested in other applications.

Images



Western blot analysis of lysates from SH-SY5Y cells, primary antibody was diluted at 1:1000, 4°C overnight

Storage

-20°C for 1 year