

MOT4 Polyclonal Antibody

Description

Product type	Primary Antibody
Code	BT-AP07083
Host	Rabbit
Isotype	IgG
Size	100ul, 50ul, 20ul
Immunogen	Synthesized peptide derived from human MOT4 Polyclonal
Mol wt	N/A
Species reactivity	Human, Mouse, Rat
Clonality	Polyclonal
Recommended application	WB, ELISA
Concentration	1 mg/ml
Full name	Monocarboxylate transporter 4
Synonyms	Monocarboxylate transporter 4 (MCT 4;Solute carrier family 16 member 3); Monocarboxylate transporter 4; MCT 4; Solute carrier family 16 member 3)

This product is for research use only, not for use in human, therapeutic or diagnostic procedure.

Background

Lactic acid and pyruvate transport across plasma membranes is catalyzed by members of the proton-linked monocarboxylate transporter (MCT) family, which has been designated solute carrier family-16. Each MCT appears to have slightly different substrate and inhibitor specificities and transport kinetics, which are related to the metabolic requirements of the tissues in which it is found. The MCTs, which include MCT1 (SLC16A1; MIM 600682) and MCT2 (SLC16A7; MIM 603654), are characterized by 12 predicted transmembrane domains (Price et al., 1998)

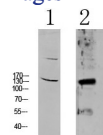
Recommended Dilution

WB: 1: 500 - 1: 2000

ELISA: 1: 10000 - 1: 20000

Not yet tested in other applications.

Images



1 mouse-liver
2 HEPG2 UV

Western blot analysis of various lysate, antibody was diluted at 1000. Secondary antibody was diluted at 1:20000

Storage

-20°C for 1 year