

## PFK-2 car Polyclonal Antibody

### Description

Product type	Primary Antibody
Code	BT-AP07088
Host	Rabbit
Isotype	IgG
Size	20ul, 50ul, 100ul
Immunogen	The antiserum was produced against synthesized peptide derived from human PFKFB2. AA range:1-50
Mol wt	58477
Species reactivity	Human, Mouse
Clonality	Polyclonal
Recommended application	WB, IHC-p, ELISA
Concentration	1 mg/ml
Full name	PFK-2 car Antibody
Synonyms	PFKFB2; 6-phosphofructo-2-kinase/fructose-2,6-bisphosphatase 2; 6PF-2-K/Fru-2,6-P2ase 2; PFK/FBPase 2; 6PF-2-K/Fru-2,6-P2ase heart-type isozyme

This product is for research use only, not for use in human, therapeutic or diagnostic procedure.

### Background

The protein encoded by PFKFB2 (6-phosphofructo-2-kinase/fructose-2,6-bisphosphatase 2) is involved in both the synthesis and degradation of fructose-2,6-bisphosphate, a regulatory molecule that controls glycolysis in eukaryotes. The encoded protein has a 6-phosphofructo-2-kinase activity that catalyzes the synthesis of fructose-2,6-bisphosphate, and a fructose-2,6-bisphosphatase activity that catalyzes the degradation of fructose-2,6-bisphosphate. This protein regulates fructose-2,6-bisphosphate levels in the heart, while a related enzyme encoded by a different gene regulates fructose-2,6-bisphosphate levels in the liver and muscle. This enzyme functions as a homodimer. Two transcript variants encoding two different isoforms have been found for PFKFB2.

### Recommended Dilution

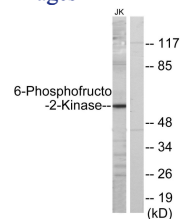
WB: 1: 500 - 1: 2000

IHC: 1: 100 - 1: 300

ELISA: 1: 20000

Not yet tested in other applications.

### Images



Western blot analysis of lysates from Jurkat cells, using PFKFB2 Antibody. The lane on the right is blocked with the synthesized peptide.

### Storage

-20°C for one year