

## PFK-2 car Polyclonal Antibody

### Description

<b>Product type</b>	Primary Antibody
<b>Code</b>	BT-AP07089
<b>Host</b>	Rabbit
<b>Isotype</b>	IgG
<b>Size</b>	20ul, 50ul, 100ul
<b>Immunogen</b>	The antiserum was produced against synthesized peptide derived from human PFKFB2. AA range:451-500
<b>Mol wt</b>	58477
<b>Species reactivity</b>	Human, Mouse, Rat
<b>Clonality</b>	Polyclonal
<b>Recommended application</b>	WB, IHC-p, ELISA
<b>Concentration</b>	1 mg/ml
<b>Full name</b>	PFK-2 car Antibody
<b>Synonyms</b>	PFKFB2; 6-phosphofructo-2-kinase/fructose-2,6-bisphosphatase 2; 6-bisphosphatase 2; 6PF-2-K/Fru-2,6-P2ase 2; PFK/FBPase 2; 6PF-2-K/Fru-2,6-P2ase heart-type isozyme

This product is for research use only, not for use in human, therapeutic or diagnostic procedure.

### Background

6-phosphofructo-2-kinase/fructose-2,6-bisphosphatase 2 by PFKFB2 is involved in both the synthesis and degradation of fructose-2,6-bisphosphate, a regulatory molecule that controls glycolysis in eukaryotes. 6-phosphofructo-2-kinase/fructose-2,6-bisphosphatase 2 has a 6-phosphofructo-2-kinase activity that catalyzes the synthesis of fructose-2,6-bisphosphate, and a fructose-2,6-bisphosphatase activity that catalyzes the degradation of fructose-2,6-bisphosphate. 6-phosphofructo-2-kinase/fructose-2,6-bisphosphatase 2 regulates fructose-2,6-bisphosphate levels in the heart, while a related enzyme encoded by a different gene regulates fructose-2,6-bisphosphate levels in the liver and muscle. This enzyme functions as a homodimer. Two transcript variants encoding two different isoforms have been found for PFKFB2.

### Recommended Dilution

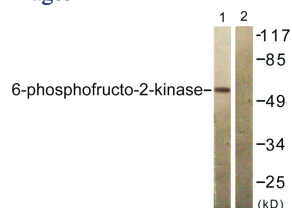
WB: 1: 500 - 1: 2000

IHC: 1: 100 - 1: 300

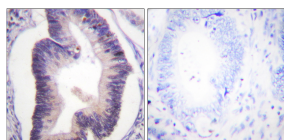
ELISA: 1: 5000

Not yet tested in other applications.

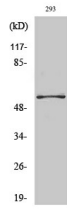
### Images



Western blot analysis of lysates from 293 cells, treated with Heat shock, using PFKFB2 Antibody. The lane on the right is blocked with the synthesized peptide.



Immunohistochemistry analysis of paraffin-embedded human colon carcinoma tissue, using PFKFB2 Antibody. The picture on the right is blocked with the synthesized peptide.



## Western Blot analysis of various cells using PFK-2 car Polyclonal Antibody

### Storage

-20°C for one year

501 Changsheng S Rd, Nanhu Dist, Jiaxing, Zhejiang, China

Tel: 86 21 31007137 | E-mail: [save@bt-laboratory.com](mailto:save@bt-laboratory.com) | [www.bt-laboratory.com](http://www.bt-laboratory.com)